

and the Settlement.¹³ The Commission has considered all the comments and interventions in determining whether, and under what conditions, to issue this relicense.

PROJECT DESCRIPTION

The Raquette River, with a drainage basin of 1,269 square miles, originates in the Adirondack Mountains, flows generally north-northwest for more than 120 miles, and empties into the St. Lawrence River near Massena, New York.¹⁴ Most of the basin is sparsely populated, with much of the land forested and brushland. The region's economy depends primarily on recreational tourism and timber-based industries.

The project consists of four developments (from upstream to downstream): Higley, Colton, Hannawa, and Sugar Island. The four developments have a total installed capacity of 47,073 kW and are all located in an 11-mile reach of the Raquette River commencing 38 miles above its confluence with the St. Lawrence River.

The Higley development includes a 34-foot-high dam with 3-foot-high flashboards, two flood gates, a trashrack, two waste gates; a 742-acre reservoir; a 160-foot-long, 50-foot-wide intake; and a powerhouse containing three generating units with a total capacity of 4,972 kW. On October 14, 2001, one of the generating units ceased operation due to turbine failure. Erie proposes to construct a new 13-foot-diameter, 225-foot-long steel intake pipeline and a new powerhouse containing one generating unit with a capacity of 7,300 kW. The existing powerhouse will be retired.

The Colton development includes a 27-foot-high dam with 2-foot-high flashboards, a log flume, a trash gate, and a gated spillway; a 195-acre-reservoir; an 11,090-foot-long steel pipeline; three penstocks; and a powerhouse containing three generating units with a total capacity of 30,101 kW.

The Hannawa development has a 38-foot-high dam with 3.5-foot-high flashboards, a log chute, a Taintor gate, and a sluice gate; a 204-acre reservoir; a 2,700-foot-long canal; two penstocks; and a powerhouse containing two generating units with a total capacity of 7,200 kW.

¹³The Mountain Club, Interior, and NYSDEC filed comments in support of this recommendation.

¹⁴The Raquette River is a navigable waterway of the United States. 8 FPC 569 (1949).

The Sugar Island development has a 37-foot-high dam with two Taintor gates; a 29-acre reservoir; an intake structure with trash racks and a headgate; a 4,700-foot-long steel pipeline; two penstocks; and a powerhouse containing two generating units with a total capacity of 4,800 kW.¹⁵

As currently licensed, and as proposed to be relicensed, these developments, except for Higley, are operated run-of-river with pondage mode using releases from the Carry Falls and the Upper Raquette River Projects.¹⁶ The Higley development operates as a re-regulating development to provide steadier flows for the downstream hydropower developments.

WATER QUALITY CERTIFICATION

Under Section 401(a)(1) of the Clean Water Act (CWA),¹⁷ the Commission may not issue a license for a hydroelectric project unless the state water quality certifying agency has issued a water quality certification for the project or has waived certification. Section 401(d) of the CWA provides that state certification shall become a condition of any federal license or permit that is issued.¹⁸ Only a reviewing court can revise or delete these conditions.¹⁹

NYSDEC issued water quality certification for the Middle Raquette Project on June 11, 1998.²⁰ As discussed in the lead order, the certification includes standard terms and conditions and the "terms and conditions of the . . . Settlement."²¹ We have appended to this license the water quality certification, which includes the standard terms

¹⁵A more detailed project description is contained in ordering paragraph B(2).

¹⁶This means that the licensee uses/releases flows received from upstream developments and in addition may use/release water stored in the reservoir (pondage), subject to drawdown limitations.

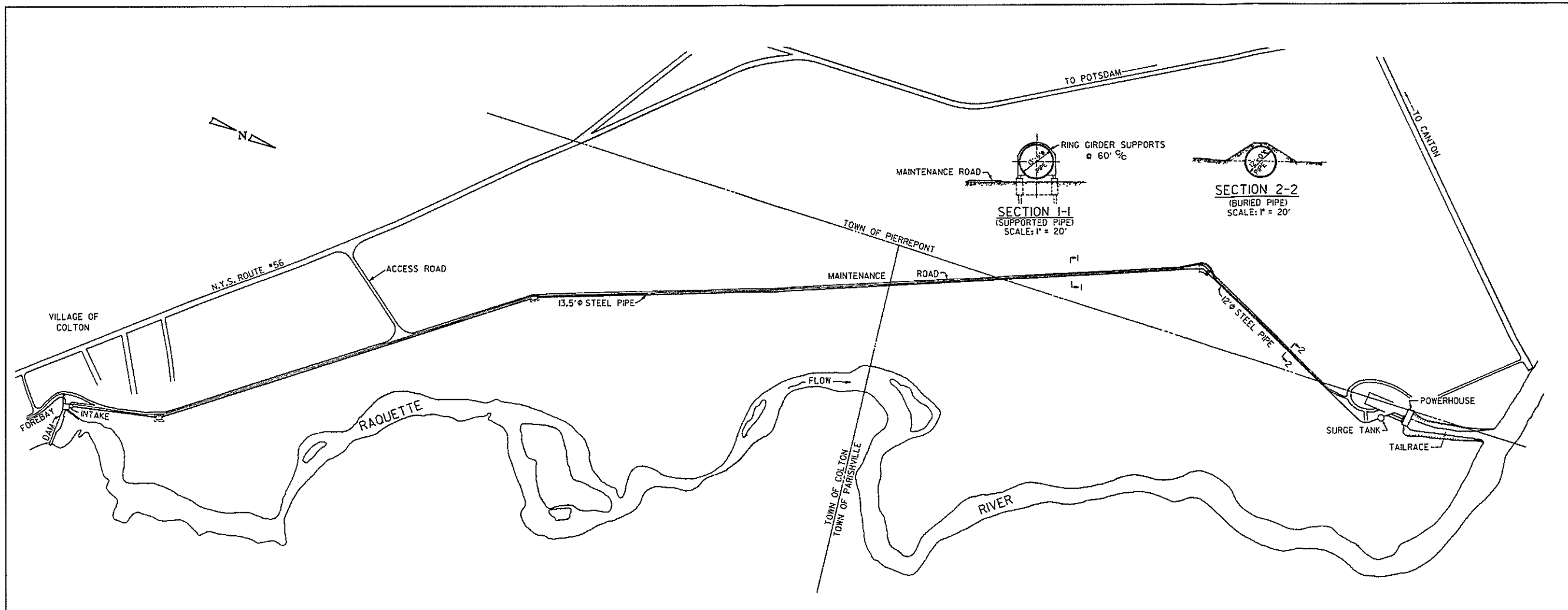
¹⁷33 U.S.C. § 1341 (a)(1).

¹⁸33 U.S.C. 1341(d).

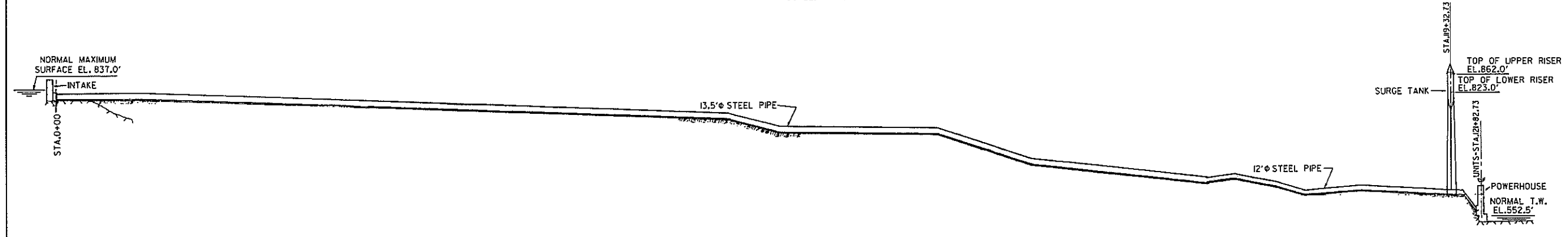
¹⁹See *American Rivers v. FERC*, 129 F.3d. 99 (D.C. Cir. 1997).

²⁰The certification was filed by the licensee on June 22, 1998.

²¹See Water Quality Certification section of lead order.



PLAN
SCALE: 1" = 400'



PROFILE
SCALES: HORIZ.: 1" = 400'
VERT.: 1" = 100'

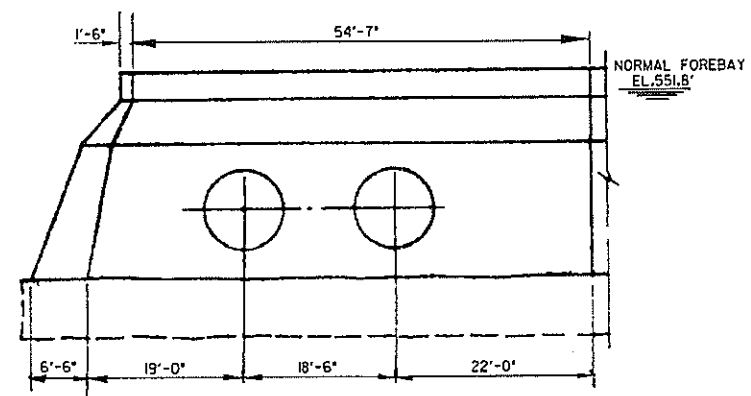
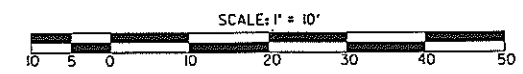
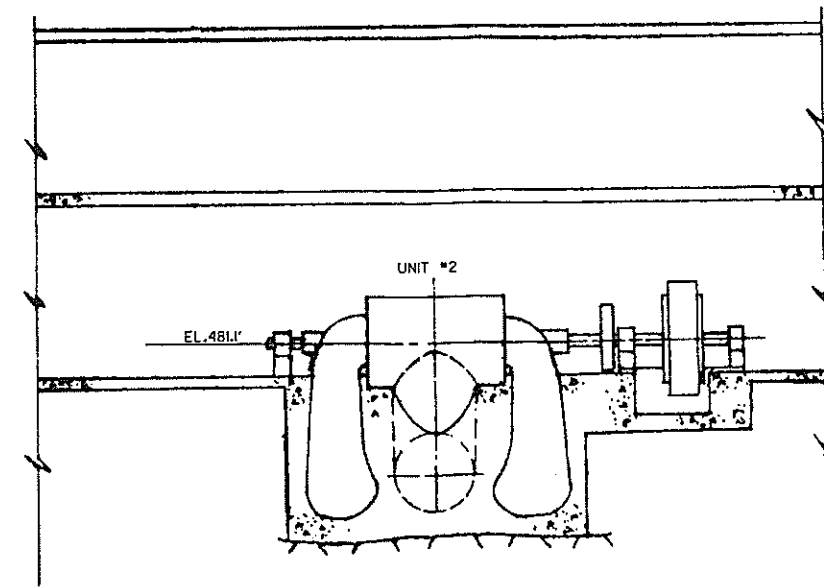
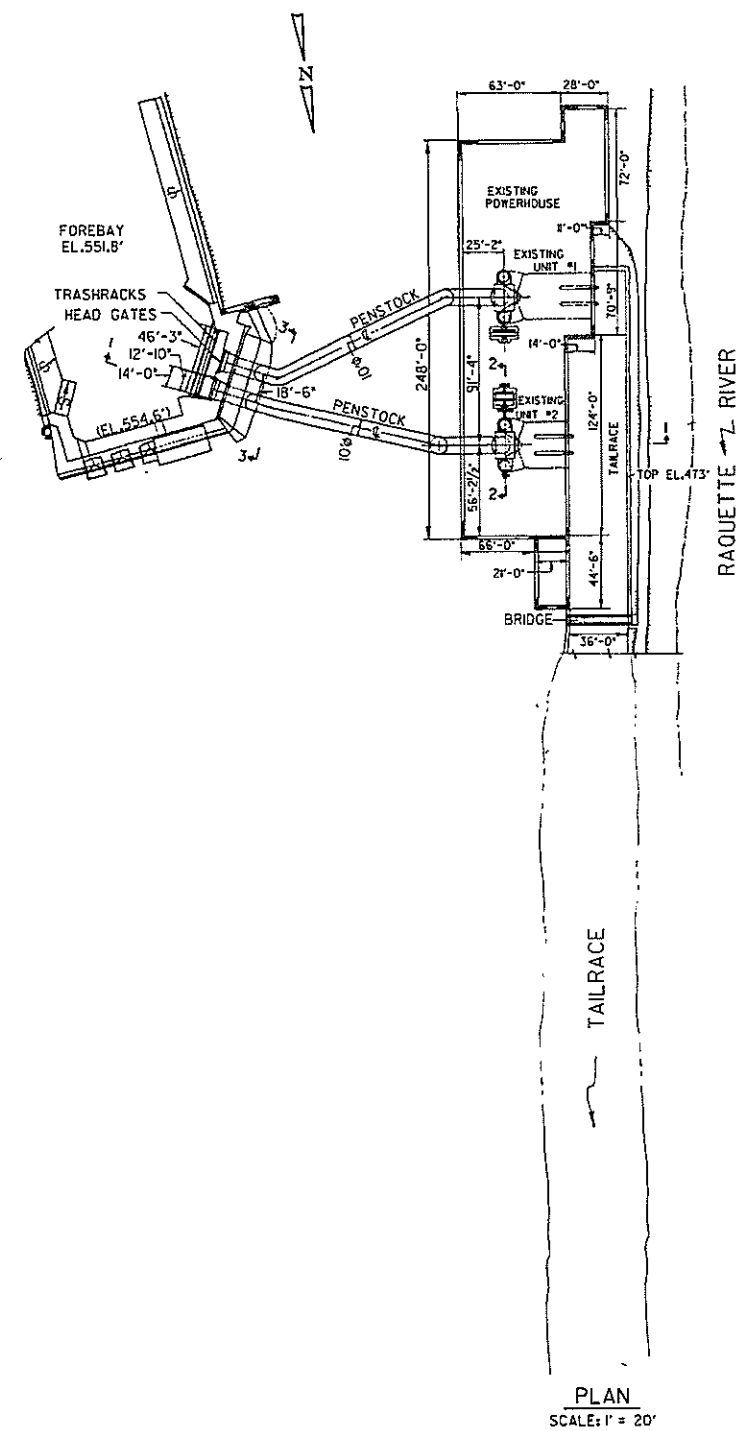
BRIE BOULEVARD HYDROPOWER LP
LIVERPOOL, N.Y.
MIDDLE RAQUETTE RIVER PROJECT
COLTON DEVELOPMENT
GENERAL PLAN AND PROFILE

EXHIBIT F SCALE: 1" = 400' SHEET NO. 2

400 200 0 400 800 1200 1600 2000

NO.	DATE	DESCRIPTION OF ISSUE OR REVISION	DR.	CK.	APP.	NO.	DATE	DESCRIPTION OF ISSUE OR REVISION	DR.	CK.	APP.	NO.	DATE	DESCRIPTION OF ISSUE OR REVISION	DR.	CK.	APP.	NO.	DATE	DESCRIPTION OF ISSUE OR REVISION	DR.	CK.	APP.	
4	2/13/02	ORDER ISSUING NEW LICENSE	PA	TMS	TMS																			
3	2/1/93	LIC. APP. ACCEPTED FOR FILING	PRW	TMS	SSH																			
2	10/28/91	LICENSE APPLICATION	KIM	TMS	JLS																			
1	12/10/90	DRAFT APPLICATION	KIM	TMS	JLS																			

ORIGINAL ISSUE DATE	
FILE NAME	F22320.DGN F22320.CIT
FERC NUMBER	2320-1008



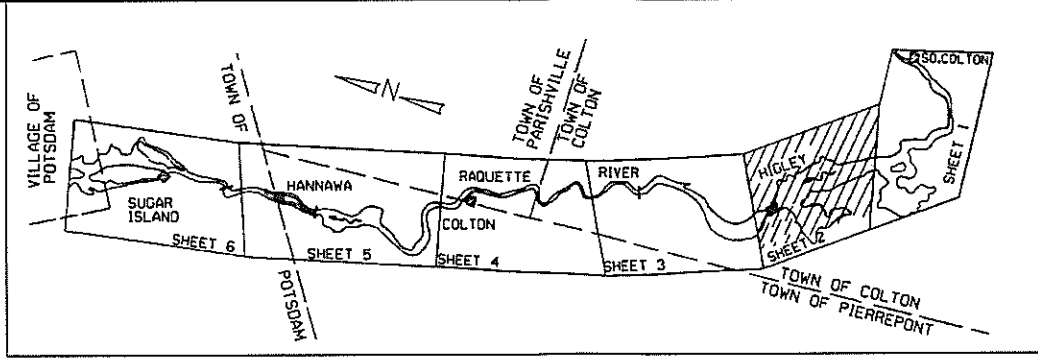
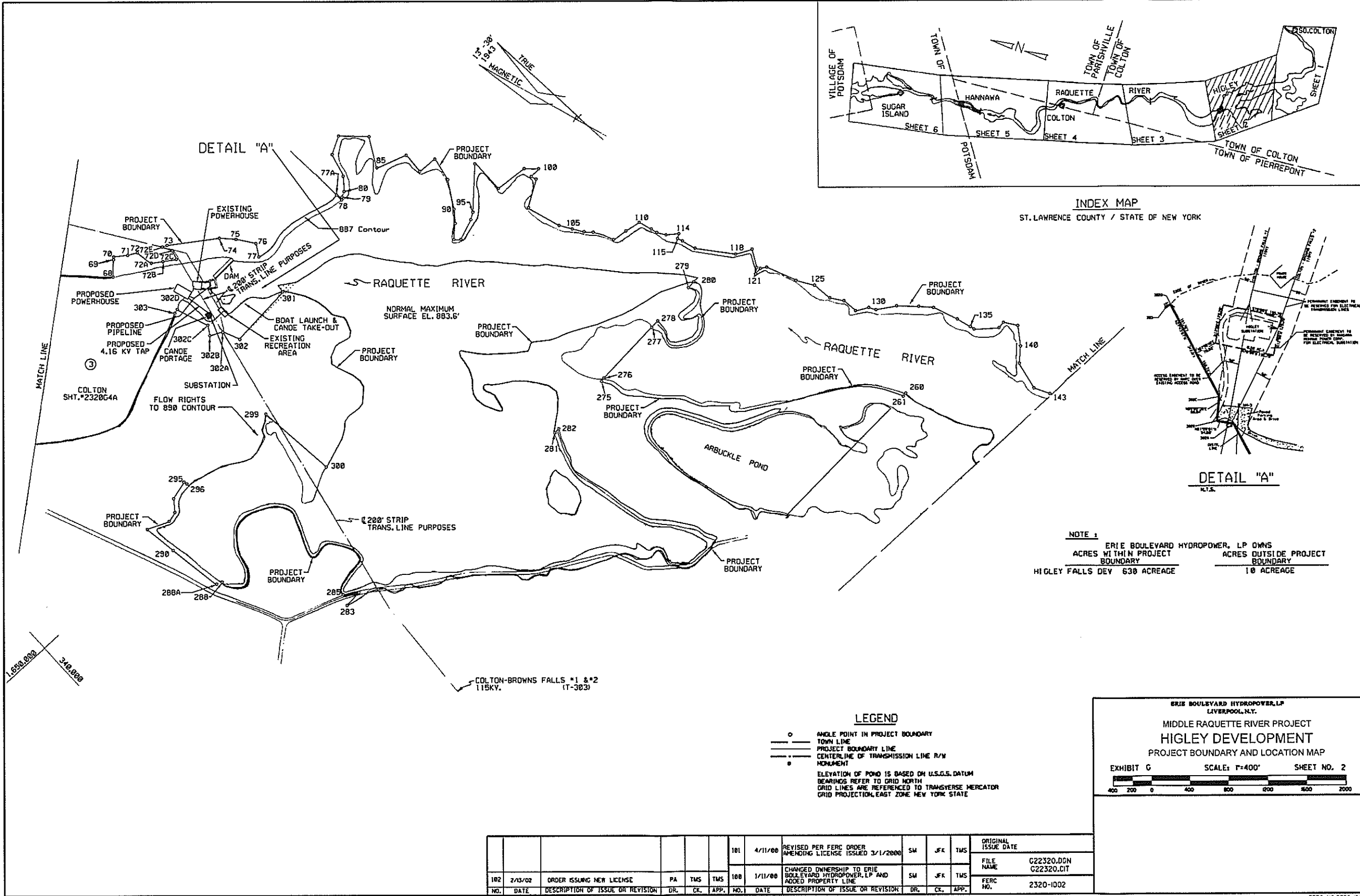
ERIE BOULEVARD HYDROPOWER LP
 LIVERPOOL, N.Y.
 MIDDLE RAQUETTE RIVER PROJECT
HANNAWA DEVELOPMENT
 PLAN, ELEVATION AND SECTIONS
 FOREBAY, INTAKE, PENSTOCKS & POWERHOUSE

EXHIBIT F
 SCALE: 1" = 20'
 SHEET NO. 6

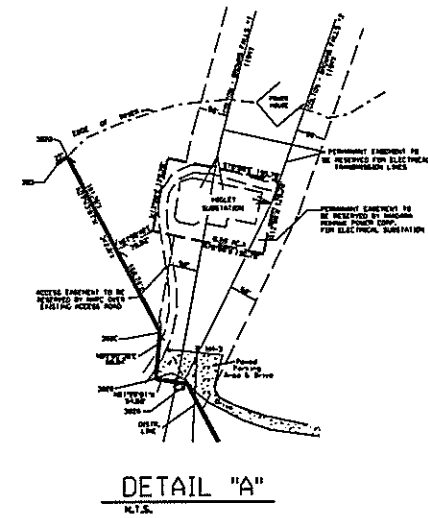
20 10 0 20 40 60 80 100

NO.	DATE	DESCRIPTION OF ISSUE OR REVISION	DR.	CK.	APP.	NO.	DATE	DESCRIPTION OF ISSUE OR REVISION	DR.	CK.	APP.	NO.	DATE	DESCRIPTION OF ISSUE OR REVISION	DR.	CK.	APP.	NO.	DATE	DESCRIPTION OF ISSUE OR REVISION	DR.	CK.	APP.
4	2/15/02	ORDER ISSUING NEW LICENSE	PA	TMS	TMS																		
3	2/1/99	LIC. APP. ACCEPTED FOR FILING	—	DWM	—																		
2	10/28/98	LICENSE APPLICATION	KIM	TMS	SSH																		
1	12/10/90	DRAFT APPLICATION	KIM	TMS	J.S.																		

ORIGINAL ISSUE DATE	
FILE NAME	F62320.DGN F62320.CIT
FERC NUMBER	2320-1012



INDEX MAP
ST. LAWRENCE COUNTY / STATE OF NEW YORK



NOTE 1
 ERIE BOULEVARD HYDROPOWER, LP OWNS
 ACRES WITHIN PROJECT BOUNDARY
 HIGLEY FALLS DEV 630 ACREAGE
 ACRES OUTSIDE PROJECT BOUNDARY
 10 ACREAGE

LEGEND
 ○ ANGLE POINT IN PROJECT BOUNDARY
 --- TOWN LINE
 - - - PROJECT BOUNDARY LINE
 - - - CENTERLINE OF TRANSMISSION LINE R/W
 ● MONUMENT
 ELEVATION OF POND IS BASED ON U.S.G.S. DATUM
 BEARINGS REFER TO GRID NORTH
 GRID LINES ARE REFERENCED TO TRANSVERSE MERCATOR
 GRID PROJECTION, EAST ZONE NEW YORK STATE

ERIE BOULEVARD HYDROPOWER, LP
 LIVERPOOL, N.Y.
 MIDDLE RAQUETTE RIVER PROJECT
 HIGLEY DEVELOPMENT
 PROJECT BOUNDARY AND LOCATION MAP
 EXHIBIT G SCALE: 1"=400' SHEET NO. 2
 400 200 0 400 800 1200 1600 2000

NO.	DATE	DESCRIPTION OF ISSUE OR REVISION	DR.	CL.	APP.	NO.	DATE	DESCRIPTION OF ISSUE OR REVISION	DR.	CL.	APP.	NO.	DATE	DESCRIPTION OF ISSUE OR REVISION	DR.	CL.	APP.	ORIGINAL ISSUE DATE
						181	4/11/00	REVISED PER FERC ORDER AMENDING LICENSE ISSUED 3/1/2000	SM	JFK	TMS							FILE NAME C22320.DGN C22320.CIT
102	2/13/02	ORDER ISSUING NEW LICENSE	PA	TMS	TMS	180	1/11/00	CHANGED OWNERSHIP TO ERIE BOULEVARD HYDROPOWER, LP AND ADDED PROPERTY LINE	SM	JFK	TMS							FERC NO. 2320-1002

