

APPENDIX G-1
DOCUMENTATION CERTIFYING THE GILMAN PROJECT HAS COMPLIED WITH THE
RECREATIONAL REQUIREMENTS OF ITS FERC LICENSE (P-2392)
DTD MAY 15, 1995

ORIGINAL



KLEINSCHMIDT ASSOCIATES
Consulting Engineers

75 Main Street PO Box 576 • Pittsfield, Maine 04967 • Phone 207-487-3328 • Fax: 207-487-3124

May 15, 1995

Lois D. Cashell, Secretary
Federal Energy Regulatory Commission
825 North Capitol Street, NE
Washington, DC 20426

Gilman Project - FERC No. 2392-004
Compliance with Article 406

Dear Secretary Cashell:

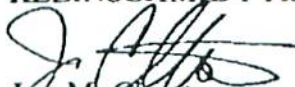
The Commission issued a new license for the referenced project to the Simpson Paper Company (Simpson) on April 13, 1994. Article 406 of the license required Simpson to implement its recreation plan, which included the construction of a boat launch facility and a canoe portage, within one year of the issuance.

On behalf of Simpson Paper Company, Inc. this letter documents that the Gilman Project's recreation plan was implemented within one year of the issuance of the license. Reproductions of photographs of the project facilities are enclosed for your information and to document the existence of the recreation facilities.

If you have questions about the project, please feel free to contact me at (207) 487-3328, or Mr. David Blanchette of Simpson Paper at (802) 892-5515.

Sincerely,

KLEINSCHMIDT ASSOCIATES


Jon M. Christensen
Project Manager

JMC:glc

cc: D. Blanchette
M. Swiger, Esq.

526-015-99-00
j:\526-015\docs\002-526.wp

9505230297

FERC DOCKETED
MAY 1 / 1995

SOUTHEAST OFFICE • 101 Trade Zone Drive • Suite 22A • West Columbia, SC 29170 • Phone 803-822-3177 • Fax 803-822-3183
NEW YORK FIELD OFFICE • 306 South Salina Street • Syracuse, New York 13202 • 315-479-8803

BOAT LAUNCH PHOTOGRAPHS



View of Launch Site from Parking Area



View of Launch Site from Bridge

CANOE PORTAGE PHOTOGRAPHS



Canoe Portage Sign



Directional Sign on Right River Bank



Upstream View of Canoe Take-Out



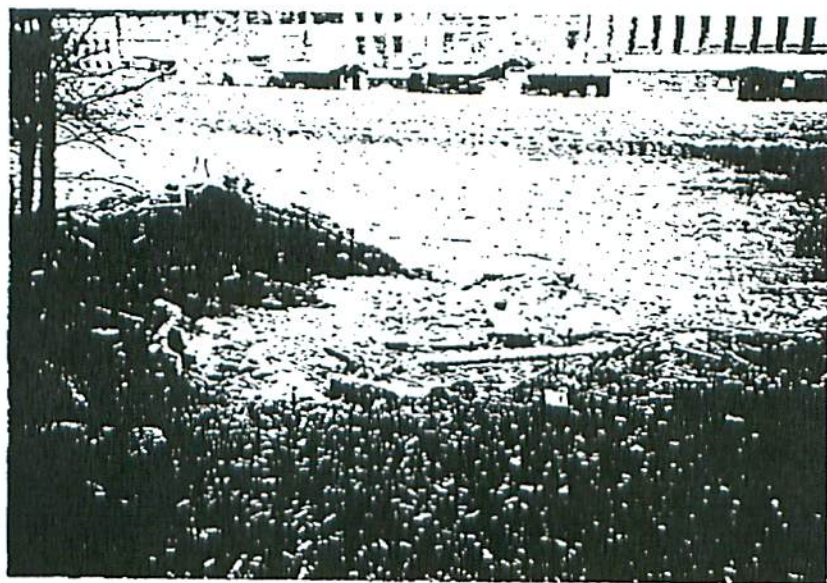
View of Take-Out



Portage Directional Sign



Portage Directional Sign



View of Downstream Put-In