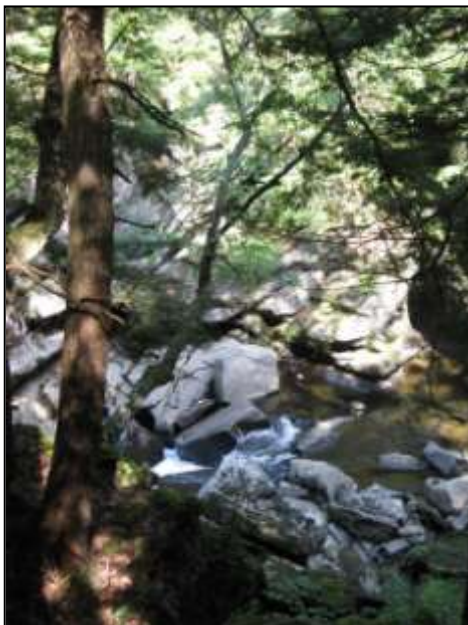


## CAVENDISH HYDROELECTRIC PROJECT (P-2489)

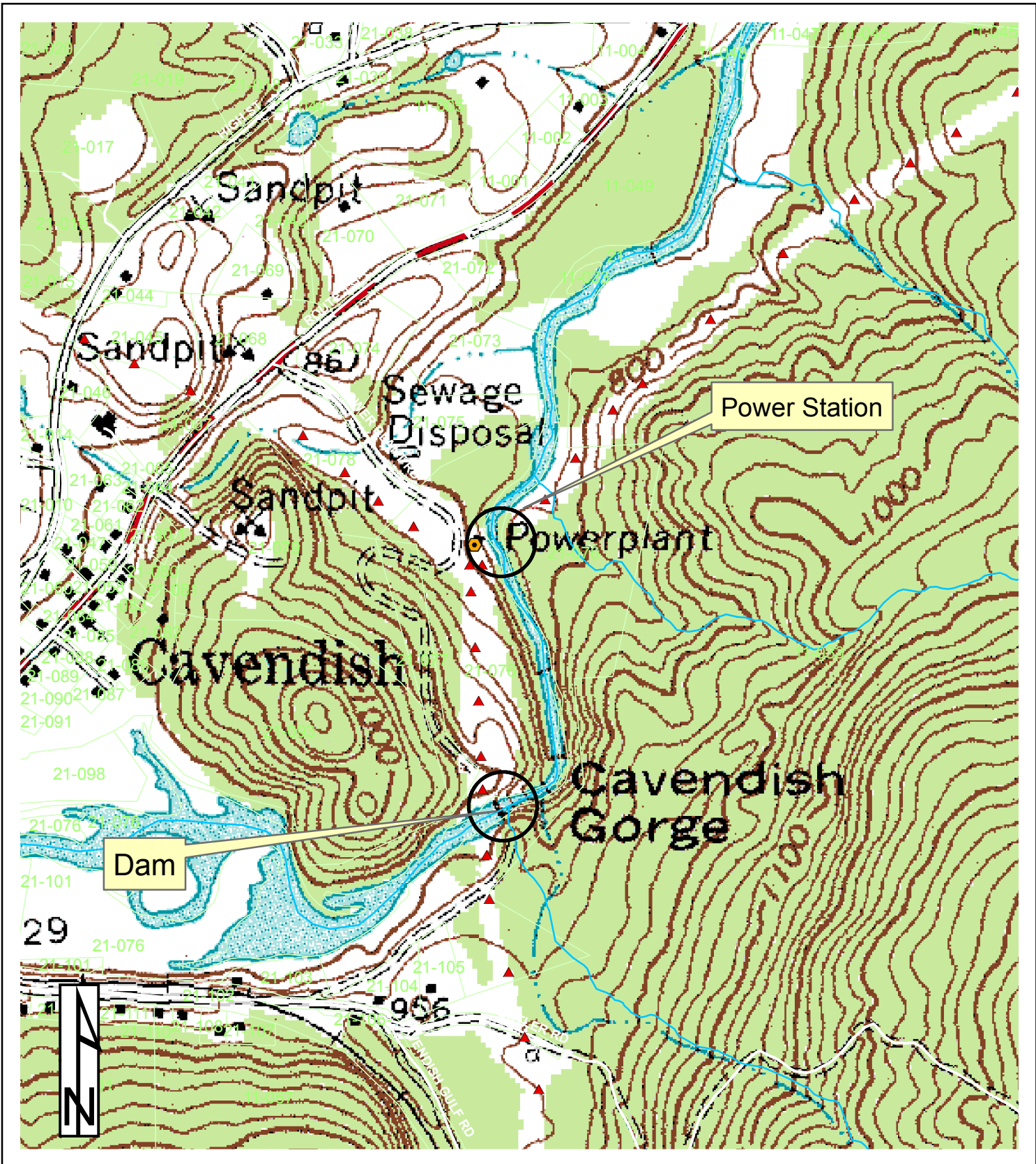
The Cavendish Hydroelectric Project is located in the town of Cavendish, Windsor County, Vermont. It was originally developed by the Claremont Power Company in 1907 - 1908. It is located on the Black River, 20.8 miles upstream of its confluence with the Connecticut River. The 1,513 acre Proctor-Piper State Forest is located one-half mile southwest of the Project. Hawks Mountain Wildlife Management Area borders the Project on the northeast. Okemo Mountain Ski Area is located about 5 miles upstream of the Project.

The 10-acre impoundment extends 3,000 feet upstream from the dam, with a normal elevation of 884.13 feet above mean sea level (msl). The concrete gravity dam is 75 feet high and set into ledge outcroppings on both sides of the river. The north spillway section is 90 feet long by 25 feet high and is topped with a 6-foot inflatable rubber flashboard installed in 1995. The south spillway section is 21 feet long by 6 feet high and topped with 2.5-foot flashboards. There is a concrete intake structure on the north bank of the river, which serves as the north abutment of the dam. The intake is equipped with manually operated headgates and an inclined trashrack.

The steel penstock is 6 feet in diameter and 1,250 feet long. A penstock manifold is located adjacent to the powerhouse and splits flow to the three horizontal shaft Francis turbine generators, each with a capacity of 480 kW, for a total of 1,440 kW of installed capacity. Appropriate generator leads and transformers connect the Project to the interconnected transmission and distribution system at the substation located adjacent to the access road and directly across from the powerhouse entrance. Maintenance buildings are co-located with the powerhouse and substation.



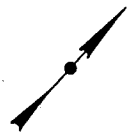
The Project is operated as a run-of-river facility. When the project is not operating, all flows are spilled from the dam. The 1,570-foot long bypass reach includes Cavendish Gorge, a series of waterfalls and cascades that flow over boulders and between steep cliffs, with numerous pools and glacial potholes formed in the channel.



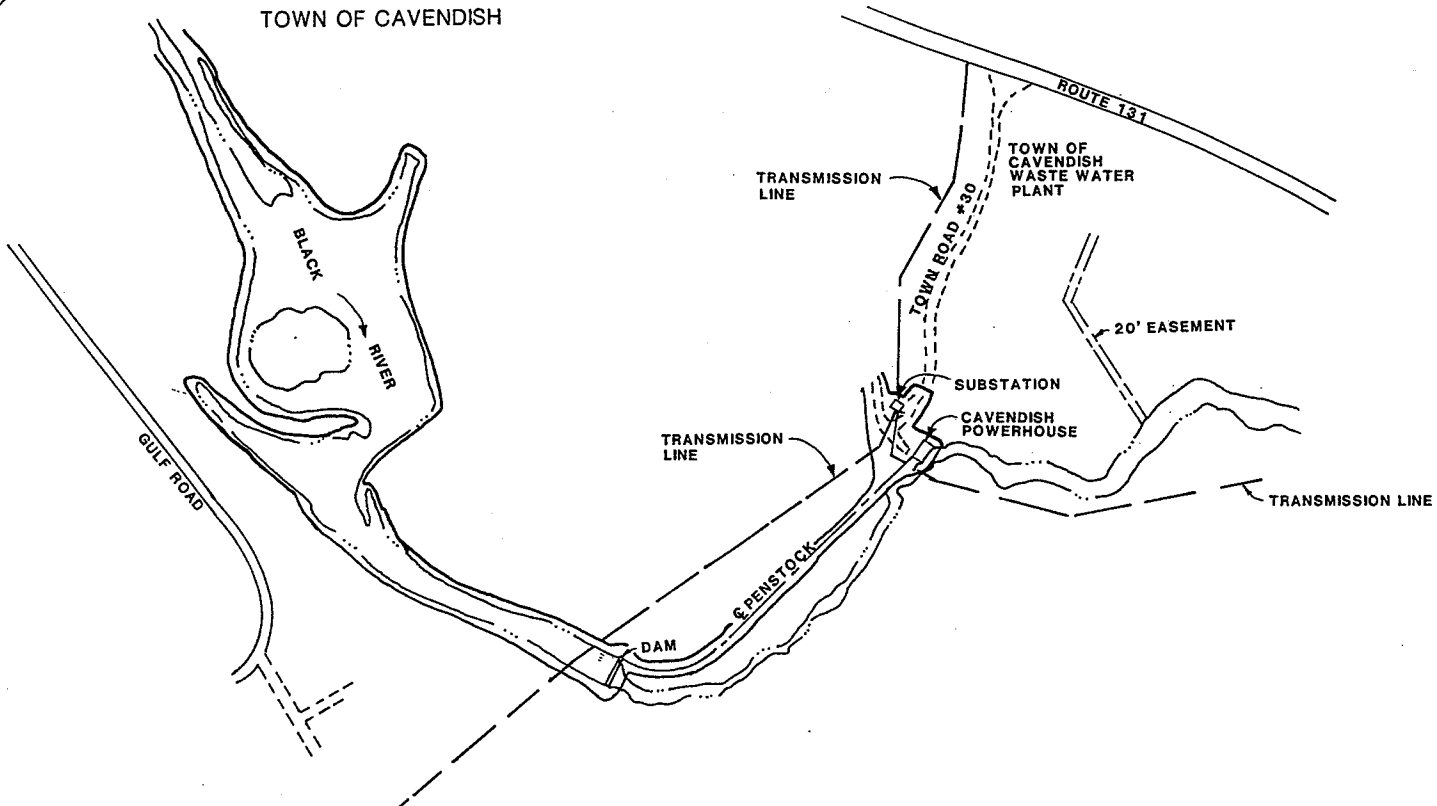
## Cavendish Hydroelectric Project Project Location Map



This map is for the sole use of Central Vermont Public Service Corporation (CVPS). CVPS makes no representation as to the accuracy or authenticity of this map. Data sources include CVPS and Vermont Center for Geographic Information. [www.vcgi.org](http://www.vcgi.org)



TOWN OF CAVENDISH



THIS DRAWING IS A PART OF THE APPLICATION FOR LICENSE MADE BY THE UNDERSIGNED THIS 16 DAY OF Nov, 1991.  
 BY: \_\_\_\_\_  
 Robert deR. Stein  
 Vice President, Energy Supply Planning and Engineering  
 Central Vermont Public Service Corporation

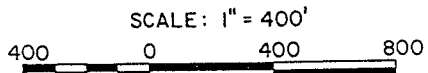


EXHIBIT G SHEET 1 of 1  
 CENTRAL VERMONT PUBLIC SERVICE CORPORATION  
 PROJECT MAP  
 CAVENDISH HYDROELECTRIC PROJECT