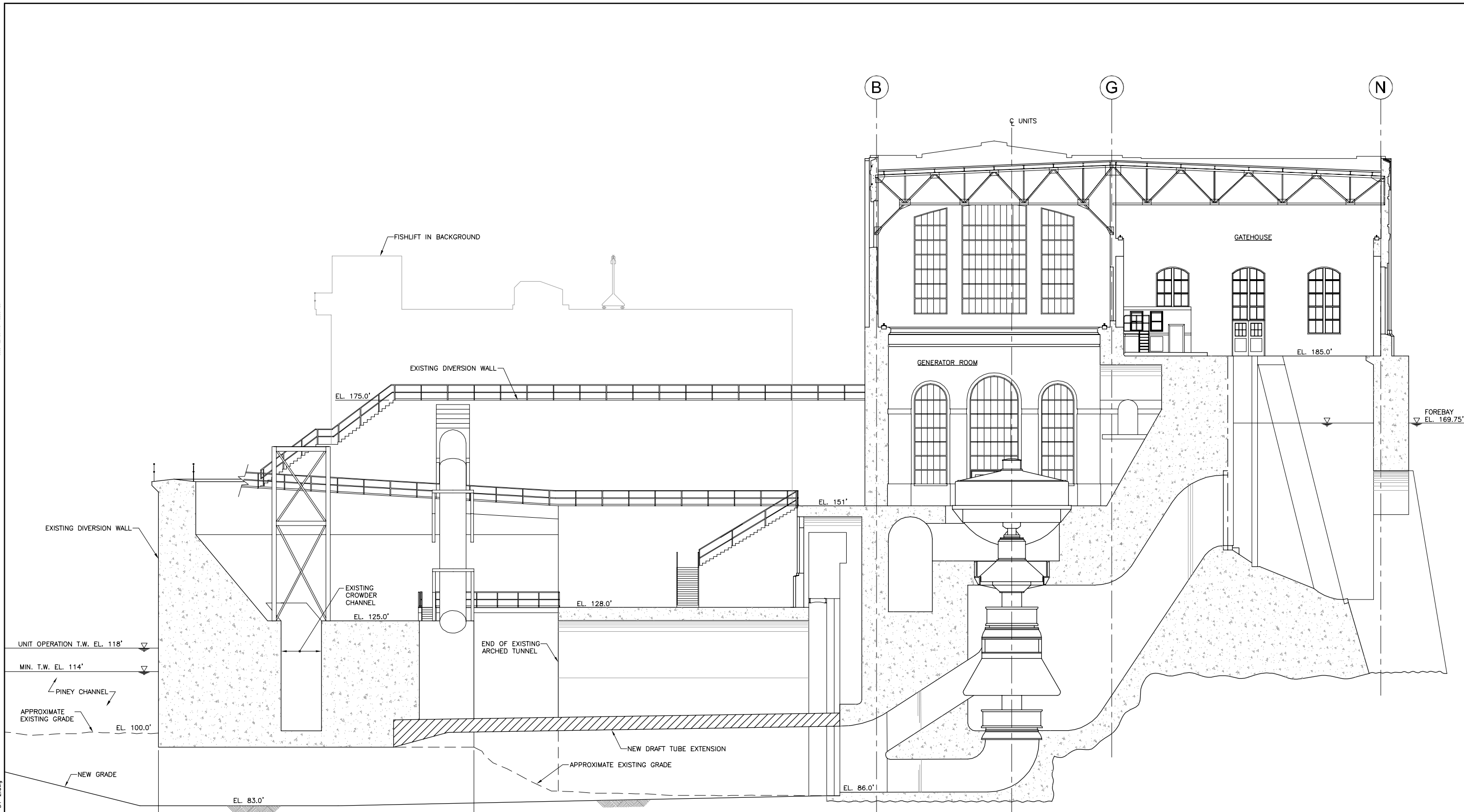


THIS DOCUMENT IS A PART OF THE PROJECT PROVIDED FOR THE CONVENIENCE OF THE USER AND IS NOT AN INSTRUMENT OF SERVICE. IT IS THE PROPERTY OF KLEINSCHMIDT ASSOCIATES, INC. AND IS NOT TO BE REPRODUCED, COPIED, OR TRANSMITTED IN ANY FORM OR BY ANY MEANS, ELECTRONIC OR MECHANICAL, INCLUDING PHOTOCOPYING, RECORDING, OR BY ANY INFORMATION STORAGE AND RETRIEVAL SYSTEM, WITHOUT THE EXPRESS WRITTEN PERMISSION OF KLEINSCHMIDT ASSOCIATES, INC. © 2005 KLEINSCHMIDT ASSOCIATES.

J:\565\020 Drawings\WORKING DRAWINGS\565-014 DT-2.dwg



SECTION A
 3/32" = 1'-0"
 DT-2
 12 0 12 24
 SCALE IN FEET

Scale:	AS SHOWN	PPL GENERATION, LLC ALLENTOWN, PA	PROGRESS PRINT
Project No:	565-014	HOLTWOOD EXPANSION PROJECT	
AutoCad Release:	2005	PROPOSED NEW UNIT No. 1 DIVERSION TUNNEL LONGITUDINAL SECTION	DT-2
Filename:	565-014 DT-2.dwg	Kleinschmidt Energy & Water Resource Consultants	
Design By:	MLD	75 Main St., P.O. Box 576 Pittsfield, Maine 04967 Telephone: (207) 487-3328 Fax: (207) 487-3124 www.KleinschmidtUSA.com	
Drawn By:	TLT		
Checked By:	TLK		
Date Revised:	1-23-06		
No.	Revision	Date	