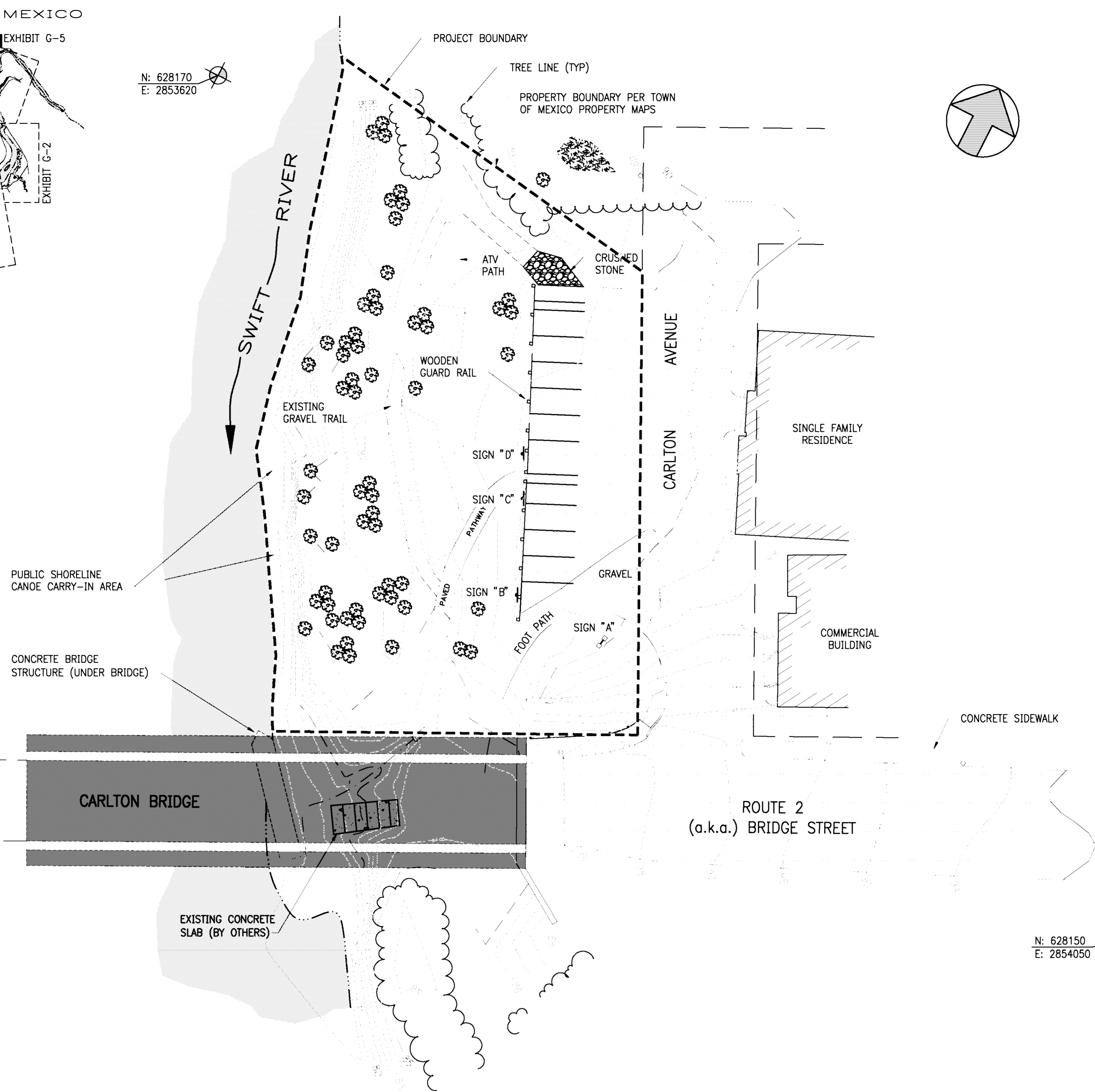


KEY MAP
SCALE: 1"=1 MILE

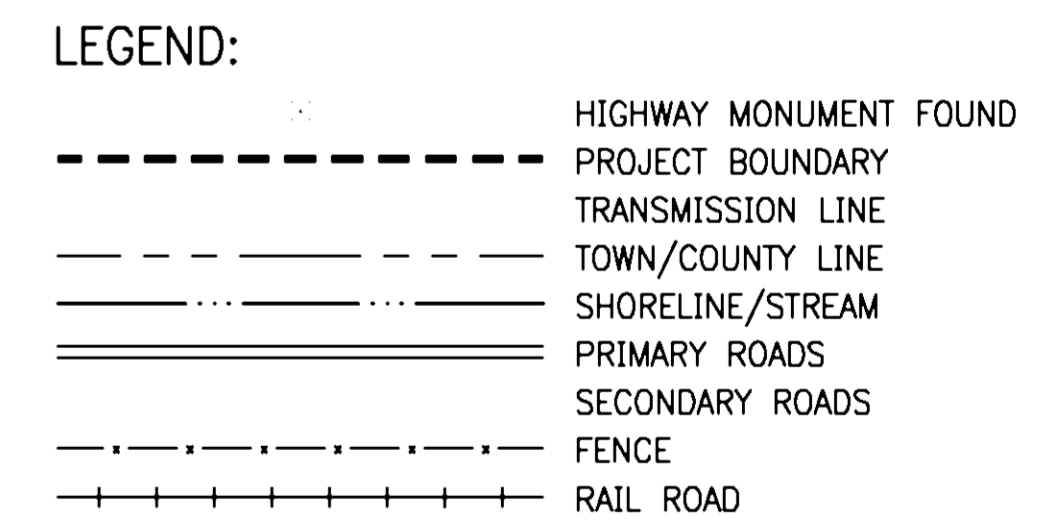
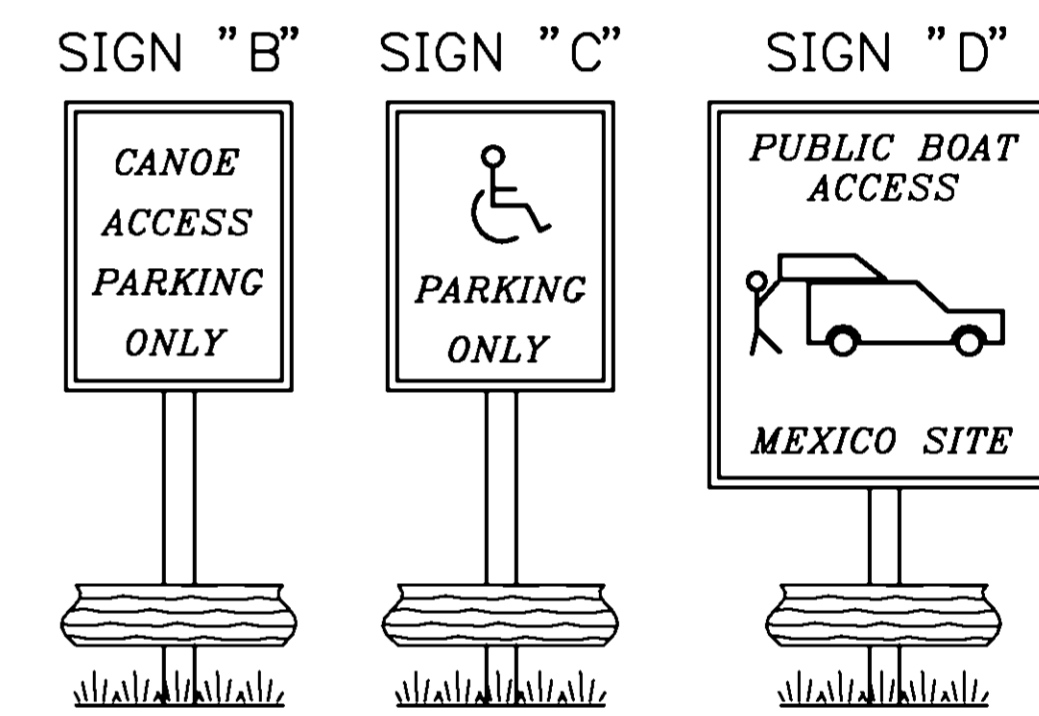
N: 628170
E: 2853620

N: 627880
E: 2853725

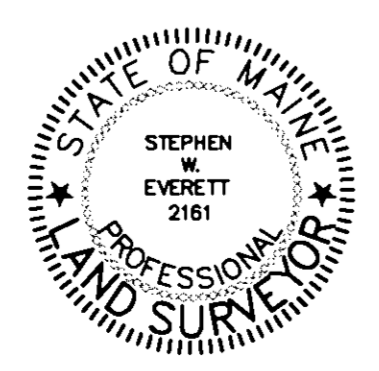
N: 628150
E: 2854050



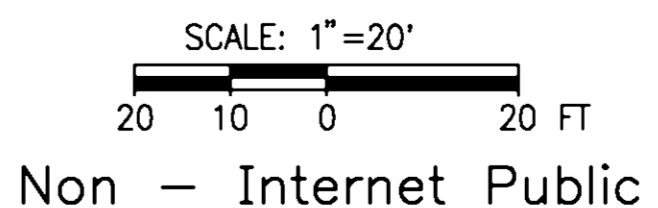
SIGN DESCRIPTION TABLE:



REFERENCE COORDINATE METADATA
PROJECTION - MAINE STATE PLANE
DATUM - NAD83
ZONE - WEST
UNITS - U.S. SURVEY FEET



I HEREBY CERTIFY TO THE FEDERAL ENERGY REGULATORY COMMISSION (FERC) THAT THIS PLAN MEETS THE CONDITIONS SET FORTH BY FERC FOR ITS EXPRESSED PURPOSE. THE PURPOSE OF THIS MAP IS TO PROVIDE A GEOREFERENCED VISUAL DEPICTION OF THE LOCATION OF PROJECT FEATURES AND BOUNDARIES BASED ON THE BEST AVAILABLE HISTORICAL DRAWINGS INCORPORATED INTO THE GEOGRAPHIC INFORMATION SYSTEM (GIS). LOCATIONS HAVE NOT BEEN VERIFIED BY PHYSICAL FIELD SURVEYS AND THIS DRAWING SHOULD NOT BE USED FOR PURPOSES OF DEVELOPING PROPERTY BOUNDARY DESCRIPTIONS



Non - Internet Public

EXHIBIT G-5		SHEET 1 OF 1	
PROJECT BOUNDARY MAP CARLTON BRIDGE BOAT LAUNCH			
RUMFORD FALLS PROJECT		FERC No. 2333	
RUMFORD FALLS POWER COMPANY LLC			
DATE:	JANUARY 2008	SCALE:	AS NOTED
		APPROVED:	

CAD FILENAME: P-2333-44, G-5, PROJECT BOUNDARY, 03-31-2008.DWG