

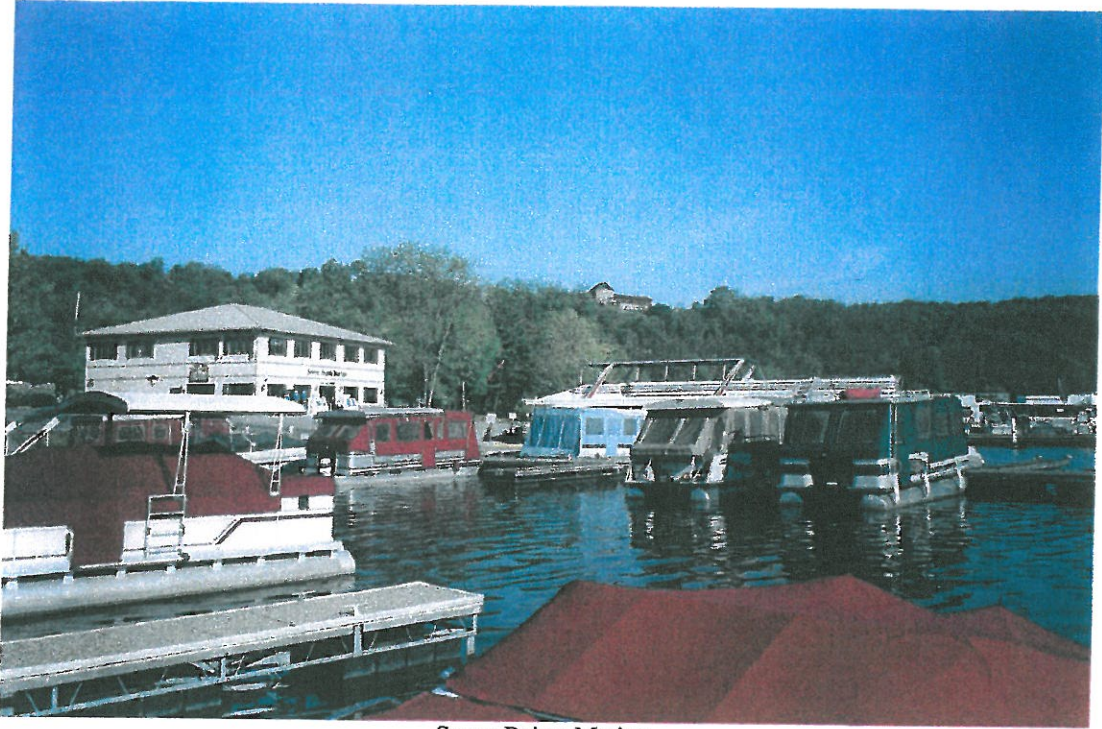


Raystown Lake from Ridenour Overlook (Looking Southwest).



Raystown Dam from Ridenour Overlook (Looking Northeast).



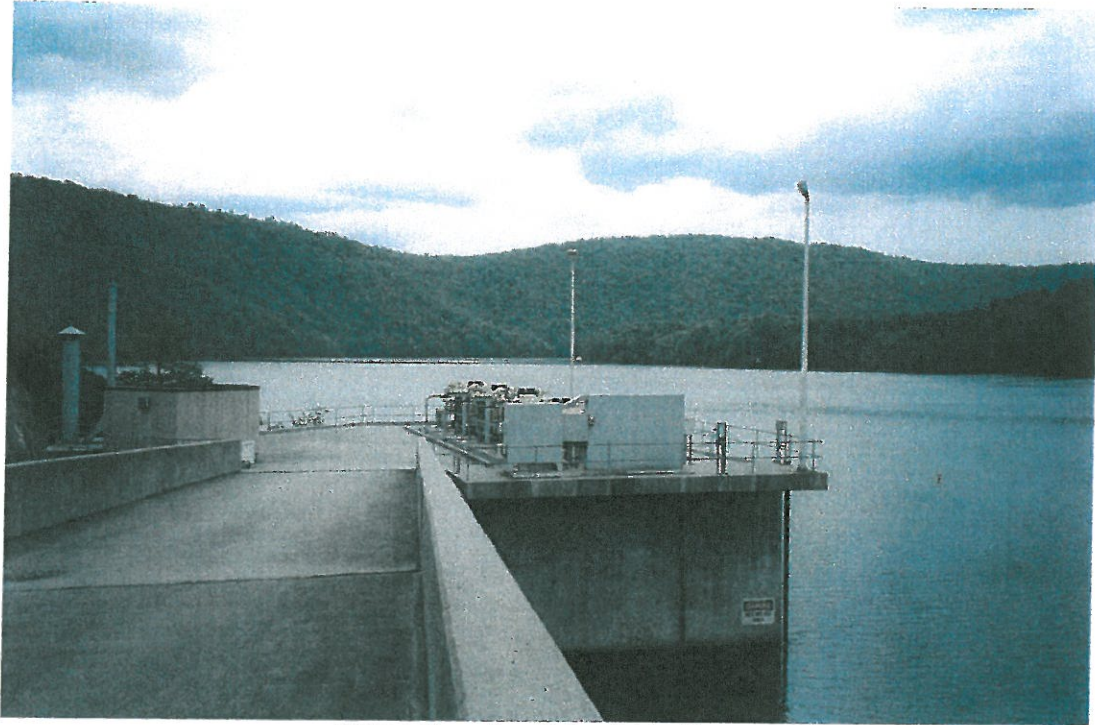


Seven Points Marina.



Corps of Engineers Visitor Center and Administration Building.

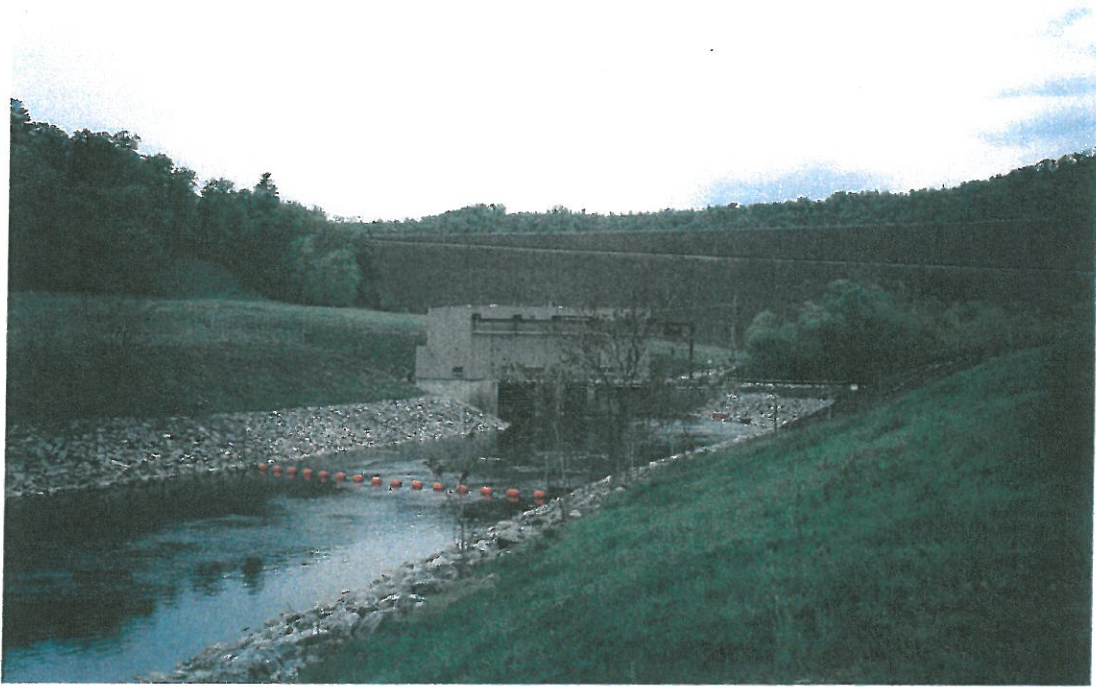




Matson Generating Station Intake Tower.



Matson Generating Station Tailrace Fishing Area (Looking Downstream).



Matson Generating Station from Tailrace Fishing Area (Looking Upstream).



Matson Generating Station Tailrace Fishing Parking Area.





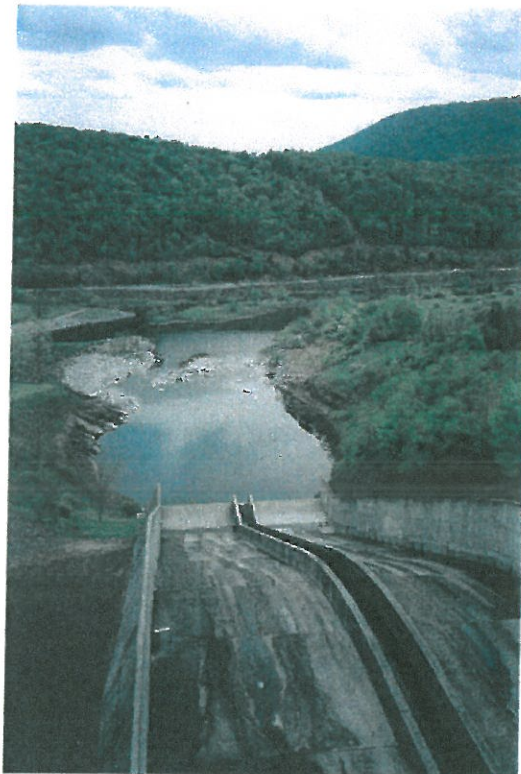
Corps of Engineers Spillway and Gates (Looking South from Tailrace Fishing Area).



Matson Generating Station and Tailrace (Discharge Approximately 500 cfs).



Matson Generating Station Tailrace (Flow Approximately 500 cfs).



Corps Spillway from Top of Dam (Matson Generating Station Tailrace at Left).