



## KENNEBEC WATER DISTRICT

**Jeffrey LaCasse**  
General Manager

P.O. Box 356  
6 Cool Street  
Waterville, ME  
04903-0356

Tel • 207-872-2763  
Fax • 207-861-8964  
[www.kennebecwater.org](http://www.kennebecwater.org)

### Board of Trustees

William Boucher  
Gary Coull  
Karl Dornish  
Jeff Earickson  
Allan Fuller  
Patricia Gorman  
Albert Hodsdon  
Mark McCluskey  
Joan Sanzenbacher  
J. Michael Talbot

Federal Energy Regulatory Commission  
Attn: Mark I. Ivy, Outdoor Recreation Planner  
Division of Hydropower Administration and Compliance  
Washington, D.C. 20426

May 26, 2016

Re: Project 2555, Recreation filings  
Docket numbers P-2555-017 and P-2555-018

Dear Mr. Ivy,

In response to your letter of February 18, 2016 regarding our filing non-compliance and follow up letter extending the time allowed for KWD to submit the required docs, I have electronically submitted several documents.

The regulatory agencies solicited for comments were provided 30 days to respond. The 2015 report was completed after expiration of the comment period.

Documents included in this submission are:

- Form 80's for 2008 and 2014
- Recreation reports for 2004, 2009, and 2015
- A Word document with photographs related to the facility
- A copy of the letter soliciting comments from the regulatory agencies

(please note that the 2004 recreation report was never completed formally as a submission. The document included is a summary of improvements in place and data collection methodology at that point in time)

I hope this submission satisfies the need to update our recreation reporting requirements. If it is not sufficient or if you need additional information, please email ([jlacasse@kennebecwater.org](mailto:jlacasse@kennebecwater.org)).

Kennebec Water District now has a plan in place to compile and submit future obligatory documents electronically by appropriate deadlines. Thank you for your patience.

Sincerely,

Jeffrey D. LaCasse

First Water District  
In the United States  
Supplying:  
Waterville, Winslow,  
Fairfield, Benton,  
& Vassalboro

# Recreation Report 2015

## Automatic Project – FERC 2555

### Messalonskee Stream, Waterville, Maine

#### History of prior recreation reporting methodology and reason for modification in 2014 Form 80 filing

In Form 80 reports completed prior to 2014, recreational use was determined using a much wider scope than used in the 2014 Form 80 report. When the Kennebec Water District (KWD) took over ownership of the Automatic Project in 1995 from the Central Maine Power Company (CMP), it received copies of prior filings by CMP. Included in this paperwork was its most recent filing of a FERC Form 80 (1991). CMP had hired a consulting firm to obtain data to complete that recreation report for the Automatic Project as well as for several other projects owned by CMP. KWD based its own reports in subsequent years on the data model described in the document “Estimates of Recreation Use on the Messalonskee 4 Development/Automatic Project, dated April 6, 1992. The methodology used in that report resulted in significant estimates of recreation use associated with the project. As the 1991 Form 80 appeared to be an acceptable submission by FERC, KWD used the same scope in its Form 80 constructions in the 2000’s.

When compiling the data for the 2014 Form 80, it became apparent to KWD that the recreation use estimates provided in the past were not true estimates of recreation use actually associated with the project. Several recreation activities that were not directly related to the resource (the stream impoundment from the Automatic Project to the Rice Rips Project) had been included in prior years (based on the CMP report). Those activities were not included in the 2014 data.

The origin of this reporting modification began when we discovered a clearer definition of the project boundary and of reportable recreation use required in Form 80. That new information seemed much more realistic and allowed us to provide a much clearer picture of what happens within the project boundary than the assumptions under which we had previously operated.

Although there are several recreational facilities in the areas adjacent to the impoundment, the only one directly related to the Automatic Project is the carry-in boat landing on North Street in Waterville. Therefore on the 2015 Form 80 we reduced our focus to the recreational activities associated with that site only. In addition to having no control or responsibility for the other recreational activity sites, they have no true relationship to the stream and we have no way of knowing the actual use numbers for those sites. In past filings, we attempted to estimate use, but our observations were limited by our access to the sites and to any available public records. Filing Form 80 to reflect only the FERC licensed boat launch is much more reasonable and accurate.

The carry-in boat launch is used primarily for canoeing, kayaking, and fishing. There are ample nearby recreational opportunities that are not associated with the project including the YMCA/Boys and Girls Club complex, a municipal swimming pool and tennis court complex, youth soccer fields, community garden plot and a playground/picnic area. The City of Waterville Parks and Recreation Department recently developed a cross country ski trail complex on city land nearby. There is also a walking path that follows a water/sewer easement parallel to the stream. Snowmobiling, cross country skiing, and ATV activities take place at various points on private lands abutting Messalonskee Stream from the Automatic Project (M4) to the Rice Rips Project (M3). The shoreline within the City of Waterville’s boundary is primarily urban residential properties. Most of the remainder of the shoreline upstream from the North Street carry-in launch to the Rice Rips Project in Oakland is rural woodland. There is some use of private residential properties abutting stream to launch canoes and kayaks, but those sites are not available for access by the general public without trespassing. That restriction removes them for consideration as valid project recreation sites.

Besides providing much more realistic estimates for recreation use related to the project, limiting the focus to just the boat launch site allows for much greater accuracy in projecting the facility use. Rather than traveling throughout the area and attempting to estimate all recreational activity use in proximate or adjacent properties, staff can visit the boat launch site more frequently getting better use accuracy and reducing estimates. Using the new methodology described above, the Form 80 data for the 2014 report is significantly different from that reported in prior filings (1991, 2003, 2008) when use of proximate recreational facilities was included in the estimates. Associated recreation use totals are significantly lower and much more representative of the activities actually associated with the Automatic Project.

#### Typical project recreation activity

The two primary uses of the site are kayaking and fishing by canoe. Almost all the use is in the upstream section of the stream between the launch and the Rice Rips Project in Oakland. There is a definite seasonal variation in the use of the boat launch site. Use of the launch site typically begins in late April and extends through October with peak use from late May to early September. The site gets little or no use in the winter period from late October until ice out.

We have noticed little variance in the frequency of use of the boat launch site over the last several years.

Weekday use: Weekday use varies mostly with the weather. On rainy or cold days there is almost no use of the facility. On dry, warmer days, there are typically two primary periods of activity at the site: in the morning hours and in the hours from 3:00 PM – dark. Peak weekday use is in the summer months June through August. The site visitors in the morning hours tend to be repeat visitors who use the site regularly. Afternoon visitors typically do not use the site as regularly.

Weekend use: Use also varies with the weather. Weekend use has no pattern but the site typically has some degree of use throughout each weekend day during summer months. Many weekend users of the site only visit the site on weekends.

Holiday use: Memorial Day, July 4, and Labor Day are the only holidays within the peak use season. July 4 and Labor Day typically see heavy site use, especially on warm, sunny days.

#### Recreational Use Monitoring program methodology at site

The supervisory staff of the Kennebec Water District is charged with the responsibility for monitoring and noting use of the North Street boat launch site. The monitoring is at random times and almost daily. The site is on a regular travel route within the Kennebec Water District service territory. Observances are made during the spring – fall period as the site is only used during ice-out periods.

Staff observes both use of the boat launch and use of the parking area associated with the launch. The parking area is monitored to determine if non boaters are using the lot and taking spaces that are meant to be allocated to boaters. Most of the monitoring is visual only, but periodically short interviews with users are conducted to determine satisfaction rates and to uncover any issues users may have.

Total annual recreational use is estimated based on the observance process cited above. Site use is historically relatively regular, dependent on time of year, time of day, and day of week and, of

course, weather. The parking lot for the boat launch is limited to five parking spaces, so it is a relatively simple task to monitor use.

#### Prior improvements to North Street Boat Launch site

The FERC license for the Automatic Project required improvements to the existing launch site on North Street. The license contained a requirement to add improvements to the parking area and to add signage indicating a FERC recreation site under management by the Kennebec Water District. Those improvements were made in 2001.

#### Addition of boat launch dock and other improvements at North Street launch site

In 2012, the Kennebec Water District (KWD) was approached by the Waterville Parks and Recreation Department and a private individual seeking assistance with a proposal to add a dock at the carry in launch site along with permanent concrete steps on the access bank. KWD assisted with the design and permitting processes and construction was completed in 2013. The steps were designed to add access safety and eliminate erosion on the natural bank sloping to the launch site on the stream bank. Methods of construction and erosion control practices were implemented under the guidance of the Maine Department of Environmental Protection.

Use of the carry-in launch facility after the installation of the dock has remained relatively unchanged. Amount of use is dependent on time of year, stream flow, weather, and weekday, weekend or holiday periods. Kayaking is the most prevalent activity followed by fishing via canoe. When the dock was added in 2013, swimming was added to the recreational opportunities at the site as the dock was periodically found to be used as a dive platform.

Since the construction of the access steps and docking facility, we have received several compliments on the improvements. We also received a couple complaints that there were youths using the dock for swimming who harassed those launching watercraft from the dock. We quickly worked with the City of Waterville's police department to ensure additional police patrols at the site and we have not received complaints since those began.

#### Addition of an upstream fish passage structure and plan for downstream passage

The Kennebec Water District applied to the Low Impact Hydropower Institute to be certified as a Low Impact Certified Hydropower Facility. Certification was received in February 2011. One condition of continued certification was the installation of facilities for eel passage. Working in conjunction with the Maine Department of Marine Resources, Essex Hydro, Inc. and an independent Maine consultant, KWD designed, piloted and monitored an upstream ladder passage system for eels at the Automatic Project dam. Initial operation began in 2012 but, because the Automatic Station was out of service that year for an extended portion of the normal eel migration period, a definitive accounting of the effectiveness of the eel passage system was not available until the next summer. The ladder is made operable during the normal annual upstream migration period, typically May through June. The system as implemented was deemed successful following the 2014 monitoring period.

Another component of eel passage is downstream passage. As Automatic Project is one of 4 hydroelectric stations on Messalonskee Stream, passage through the Automatic Project needed to be coordinated with passage through the other projects. Rather than implementing costly and impactful downstream passage components at each of the Messalonskee Stream projects, the accepted process for downstream passage will involve manual collection of adult eels at the Snow Pond prior to entry into



Messalonskee Stream, trucking of the fish downstream past all the hydroelectric projects, and release of the fish into the Kennebec River.

Eel passage is not a direct recreational activity, but it does provide a boost to the ecosystem of the stream in the Automatic Project impoundment. Although eels are not themselves sportfish, theoretically, the stream food chain will be fortified and the stream should become a better fishery.

#### Comments requested from Regulatory agencies

Solicitation of comments from selected regulatory agencies was required as a component of this report. Information was provided regarding the recreational use within the Automatic Project boundaries and comments on the adequacy of such and recommendations for improvements were requested. Several site photographs were also included with the solicitations. The agencies were asked to respond within 30 days. Letters were sent to the Maine Department of Conservation, the Maine Department of Inland Fisheries and Wildlife, the U.S. Fish and Wildlife Service, and the National Park Service.

In addition to information describing the recreation opportunities at the site and adjacent areas, the agencies were asked two specific questions:

Do you feel that the boat launch facility is adequate to meet the demand?

Do you feel there is a need for additional facilities related the Project?

By the deadline, two responses were received, both via email. Kevin Mendik of the National Park Service stated "the National Park Service (NPS) concurs with your assessment that the work accomplished to date at the carry-in boat launch site off North Street in Waterville satisfies the requirements of the Recreation Plan required in Article 408....." Steven Shepard of the U.S. Fish and Wildlife Service stated "The Service agrees with the conclusions of the Draft Recreation Report."

#### Attached:

Photographs of site and site features

Template of letter to regulatory agencies

May 23, 2016

Report filed by:

Jeffrey D. LaCasse, General Manager

[jlacasse@kennebecwater.org](mailto:jlacasse@kennebecwater.org)

Kennebec Water District

6 Cool Street

PO Box 356

Waterville, Maine 04903-0356

## 2009 Recreation Report for Automatic Project, FERC 2555

(Note: this report has been reformatted and updated for re-filing in 2016)

### Project ownership and requirements under the license for FERC project 2555

Under its FERC license terms and the related Order Approving Recreation Plan, the Kennebec Water District (KWD) is required to periodically file a FERC Form 80 and a related Recreation Report. This report is based on a compilation of data related to recreational activities in the area of the Automatic Project impoundment. It is intended also to offer an evaluation of the adequacy of the site to meet recreational needs with input from interested regulatory agencies, both state and federal.

The sole recreation facility related requirement for the Automatic Project under the initial terms of its license was to install a parking area with appropriate identifying signage at the carry-in boat launch on North Street in Waterville.

### Recreation activities in the project boundary

The former owners of the Automatic Project, the Central Maine Power Company (CMP), commissioned a study in 1992 to determine recreation use at all FERC projects the company owned at that time. As a result of the study, the consultant, Land & Water Associates of Hallowell Maine, created a report titled "Estimates of Recreation Use on the Messalonskee 4 Development/Automatic Project". The intent of the report was to describe the methodology used to create estimates of recreation use in the project to be used in completing FERC form 80. The methods used in data collection and the logic for derived recreational use estimates are described in detail.

As in the last required compilation of Form 80 data from 2002 and 2003, the CMP report was used as a template to detail recreational activity in the area of the Automatic Project boundary. Although the only facility in the project impoundment area for which the Kennebec Water District has direct responsibility is the carry-in boat launch off North Street in Waterville, several other recreational offerings in adjacent areas were also included in the compilations under the CMP report criteria. As a result, in the 2008 Form 80, KWD attempted to estimate total recreation use days not only for the boat launch site but for all the activities originally cited in the CMP report. Those activities included hunting and alternate access sites. There are also many other recreation facilities – a municipal swimming pool complex, tennis courts, youth soccer fields, the Waterville Area Boys and Girls club, and a walking trail on the Quarry Road – that do not have a direct relationship to the project or are within its boundaries, but which were considered in the estimates of recreational use based in large part on assumptions made from the observations in the CMP report.

At the North Street boat launch site, canoeing and kayaking again were virtually the only activities. Kayaks, however, seemed to have overtaken canoes as the watercraft of choice for facility users. Canoes continued to be used more for fishing, where kayakers seemed to be

simply paddling for exercise and enjoyment. The facility parking area got heavy use, but never was observed to be at overflow, even during peak holiday periods.

#### Method of data collection

In 2008, the Kennebec Water District, owner of the Automatic Project, was required to complete a FERC Form 80, a compilation of recreation use within the project boundaries and follow up the data collection with a summary of that activity.

As in the early 2000's, recreation use related to the project was monitored by Kennebec Water District management and treatment plant staff. Monitoring was intermittent and occurred when personnel passed the site during normal operations. Staff logged observations of recreational use. However, most of the observations were made at the boat launch site which is easy to observe and directly related to the FERC license. It was almost impossible to monitor other recreation use in the area with any sense of accuracy. Because of that lack of personal observation, we used estimates developed based on observations derived from the CMP report to fill that data gap.

Unlike in the last recreation report collection period, 2002 and 2003, the Kennebec Water District did not specifically seek to interview users of the boat launch site, although in several instances when monitoring the sites, our staff engaged users in casual conversation. Almost all the conversations were pleasant and the users had positive comments on the site improvements made a few years earlier. Many were under the impression that the launch was part of the larger recreational activity sites in the immediate area adjacent to the launch, most of which are maintained by the City of Waterville Department of Parks and Recreation.

#### Opinion on adequacy of meeting recreational needs

Based on the observations taken of the carry-in boat launch and its parking area, it seems the facility is currently meeting the needs of users. In addition, although it is almost impossible to accurately account for all users of the ancillary recreational facilities, they are definitely well used and seem to be enjoyed. The total of the recreation offerings in the immediate area provide exceptional opportunities for various types of activities.

Jeffrey D. LaCasse  
General Manager  
Kennebec Water District

## Recreation Report in conjunction with FERC Form 80 2004

### Introduction

The Kennebec Water District, owners of the Automatic Project, FERC 2555, is required to file a report in conjunction with the filing of FERC Recreation Form 80. The report should detail the use of recreation areas associated with the project, monitoring methodology used in obtaining use data, and a conclusion on the adequacy of the recreational facilities.

### Facility improvements required under license agreement

The Kennebec Water District proposed constructing improvements to the parking area at the carry-in boat launch on North Street in Waterville under guidelines issued in the FERC approved recreation plan for the project.

In early 2001, the parking area was paved and striped to allow for 5 parking spaces and an adequate backup area within the lot. Treated wooden bollards were installed between the parking lot and the access walkway to the launch area. The intent of the bollards is to restrict the launch to carry in and not allow any trailered boats access to the launch area. The bollards were installed in agreement with the City of Waterville Fire Department. Two of the bollards are removable to allow access to the launch by emergency responder vehicles. A sign was also added adjacent to the launch to signify that the launch was a FERC project site and to indicate ownership and contact information.

### Monitoring and data collection methods

Recreation use related to the project was monitored by Kennebec Water District management and treatment plant staff. Monitoring was intermittent and occurred when personnel passed the site during normal operations. The site is on a regular transit route within the Kennebec Water District service area. Monitors uses a simple form to record use and other comments.

The majority of use at the launch site is canoeists, many of whom are fishing to some degree as well. Kayak use is the next highest site use. The impoundment from the launch site upstream to the Rice Rips Project, mostly rural woodland on both shorelines, is the primary route of the boaters as downstream is a shorter, populated urban setting not as attractive for fishermen.

Monitoring use at recreation sites and facilities in the area proved to be much more difficult than monitoring at the boat launch site as we had limited access to many of the other facilities. To estimate use throughout the area, we used collection and estimating methods from a plan contracted by previous project owner, Central Maine Power Company. Although the total estimated recreational use in the area based on the CMP methods appeared to us to be very high for the resource types listed, we felt that the researchers were required to collect much more information than we were able. We adjusted our data estimates to better match what was viewed in compilation of the CMP report.

### Conclusion

An objective of this report is to determine if the facility is meeting the recreational needs of the area. Based on the monitoring of the boat launch site, the facility seems to be meeting its purpose. The parking lot is frequently in use, but not to overflow level. Comments received during our site monitoring related to the site modifications have been positive. The other recreational facilities in the area are very popular with a much larger volume of use than the carry-in boat launch.

Jeffrey D. LaCasse  
General Manager  
Kennebec Water District



## KENNEBEC WATER DISTRICT

**Jeffrey LaCasse**  
General Manager

P.O. Box 356  
6 Cool Street  
Waterville, ME  
04903-0356

Tel • 207-872-2763  
Fax • 207-861-8964  
[www.kennebecwater.org](http://www.kennebecwater.org)

### Board of Trustees

William Boucher  
Gary Coull  
Karl Dornish  
Jeff Earickson  
Allan Fuller  
Patricia Gorman  
Albert Hodsdon  
Mark McCluskey  
Joan Sanzenbacher  
J. Michael Talbot

First Water District  
In the United States  
Supplying:  
Waterville, Winslow,  
Fairfield, Benton,  
& Vassalboro

Maine Department of Conservation  
Maine Department of Inland Fisheries and Wildlife  
U.S. Fish and Wildlife Service  
National Park Service

April 22, 2016

Re: FERC project 2555 Maine, Automatic Project

To Whom It May Concern (if you are not the appropriate contact, please forward this letter. Thank you):

As a condition of the recreation report to be filed in conjunction with FERC Recreation Form 80, the Kennebec Water District (KWD), owner of the Automatic Project in Waterville, Maine, is required to solicit comments from specific state and federal agencies. Your agency is one of those on the comment solicitation list. From you organization we are seeking comments on our adequacy in meeting the recreational needs at the project as well as any related recommendations you might have.

The Recreation Plan within the FERC license for Automatic Project is limited to requiring KWD to construct an improved parking area and appropriate signage for a carry-in boat launch access site off North Street in Waterville. This location is one of the few public access points to the Automatic impoundment which extends from Western Avenue in Waterville to the upstream Rice Rips Project in Oakland.

In the early 2000's, KWD constructed a paved parking lot marked for five vehicles at the North Street boat launch. This improvement satisfied the recreation requirements in the license. Access to the stream was over an unimproved grass and gravel slope. In 2013, KWD, in conjunction with the City of Waterville and some private citizens, constructed wide concrete access steps to the shore and a removable wooden dock to provide easier and safer canoe and kayak access and egress. Photos of the improved parking area, the grass/gravel access point prior to the steps and dock, and the improved site with the steps and dock are included with this letter.

The North Street boat launch site is the only recreation site that KWD has improved related to its license requirements. Most of the property in Waterville abutting the stream is privately owned urban properties. In

Oakland, most of the property is privately owned rural properties. In Waterville, immediately adjacent to the boat launch site are many public recreation facilities. Those facilities include the Waterville Area YMCA/Boys and Girls Club, the Waterville Municipal Pool complex, municipal tennis courts, a public picnic area, youth soccer fields and a public walking trail running through these facilities (these facilities are shown in the attached Google Earth photograph - running from south to north).

The opinion of the Kennebec Water District is that its boat launch site is the only recreational facility for which the District should be responsible based on the combination of the referenced proximate available public recreation facilities in Waterville and private ownership of most of the remainder of the impoundment shoreline. On our most recent Form 80, we have estimated annual use of the boat launch facility to be 4220 recreation days. The recreational activities associated with the carry-in boat launch site are primarily limited to kayaking, canoeing, and fishing.

The official recreation report will be filed after all regulatory agency comments are received and added. Comments are due within 30 days of receipt of this request. Prompt comments (or notice that no comments will be forthcoming) will be much appreciated to allow the report to be completed and filed quicker. Email responses ([jlacasse@kennebecwater.org](mailto:jlacasse@kennebecwater.org)) are preferred, but mailed responses are also fine.

Upon request, I'll provide to you a copy of the final recreation report.

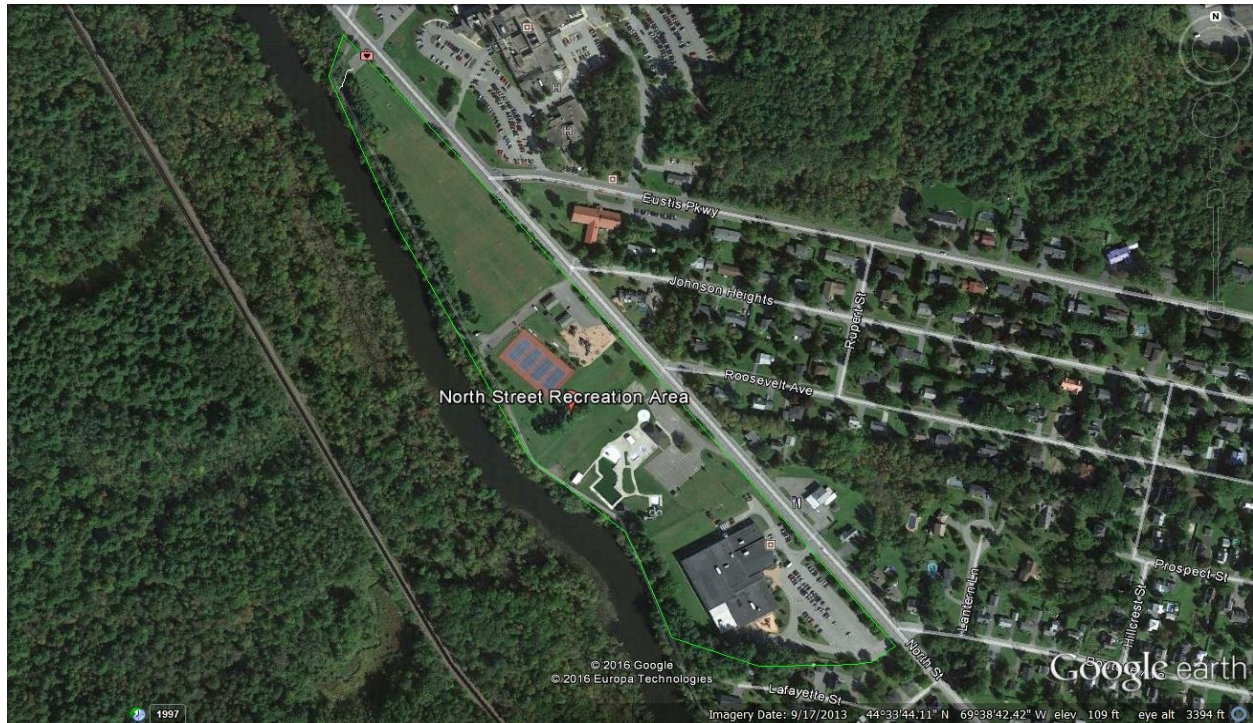
Thank you for your consideration.

Sincerely,

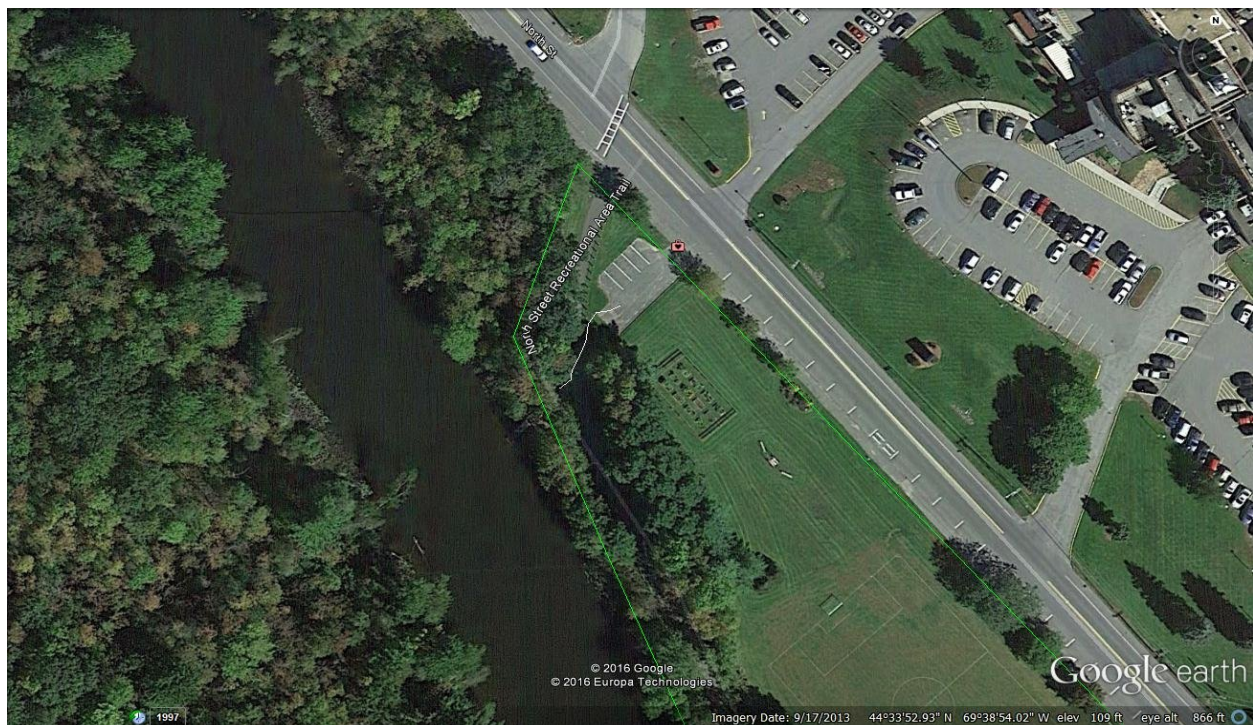
Jeffrey D. LaCasse



## 2015 Recreation Report Photographs (1)



Wide angle of North Street recreation facilities



Close up of North Street boat launch site and parking area



2015 Recreation Report Photographs (2)



North Street Boat Launch Access Site prior to 2013 upgrades



North Street Boat Launch Access Site after Dock and Access Stairs Installation in 2013



### 2015 Recreation Report Photographs (3)



North Street Boat Launch Parking Area



North Street Boat Launch Site Signage



2015 Recreation Report Photographs (4)



Eel Ladder looking down from spillway deck



Eel Ladder in background extending down from spillway deck

Federal Energy Regulatory  
Commission (FERC)  
FERC Form 80

## Licensed Hydropower Development Recreation Report

Form Approved  
OMB No. 1902-0106  
Expires: 09/30/2016  
Burden 3.0 hours

### General Information:

This form collects data on recreation amenities at projects licensed by FERC under the Federal Power Act (16 USC 791a-825r). This form must be submitted by licensees of all projects except those specifically exempted under 18 CFR 8.11 (c). For regular, periodic filings, submit this form on or before April 1, 2015. Submit subsequent filings of this form on or before April 1, every 6th year thereafter (for example, 2021, 2027, etc.). For initial Form No. 80 filings (18CFR 8.11(b)), each licensee of an unconstructed project shall file an initial Form No. 80 after such project has been in operation for a full calendar year prior to the filing deadline. Each licensee of an existing (constructed) project shall file an initial Form No. 80 after such project has been licensed for a full calendar year prior to the filing deadline. Filing electronically is preferred. (See <http://www.ferc.gov> for more information.) If you cannot file electronically, submit an original and two copies of the form to the: Federal Energy Regulatory Commission, Office of the Secretary, 888 First St., NE, Washington, DC 20426.

The public burden estimated for this form is three hours per response, including the time for reviewing instructions, searching existing data sources, gathering and maintaining the data needed, and completing the collection of information. Send comments regarding the burden estimate or any aspect of this collection of information, including suggestions for reducing burden, to: FERC via e-mail [DataClearance@ferc.gov](mailto:DataClearance@ferc.gov); or mail to 888 First Street NE, Washington, DC 20426 (Attention: Information Clearance Officer) and Office of Management and Budget (OMB), via e-mail to [oira\\_submission@omb.eop.gov](mailto:oira_submission@omb.eop.gov); or mail to OMB, Office of Information and Regulatory Affairs, Attention: Desk Officer for FERC, Washington, DC 20503. Include OMB Control Number 1902-0106 as a point of reference. No person shall be subject to any penalty for failing to comply with a collection of information if the collection of information does not display a valid control number (44 U.S.C. § 3512 (a)).

### Instructions:

- All data reported on this form must represent publicly available recreation amenities and services located within the project boundary.
- To ensure a common understanding of terms, please refer to the Glossary on page 3.
- Report actual data for each item. If actual data are unavailable, then please estimate.
- Submit a completed form for each development at your project.

### Schedule 1. General Data

<p>1. Licensee Name: <u>KENNEBEC WATER DISTRICT</u></p> <p>2. Project Name: <u>AUTOMATIC</u></p> <p>3. Project Number: <u>2555</u></p> <p>4. Development Name: <u>AUTOMATIC</u></p> <p>States Development/Project Traverses (List state with largest area within the development/project boundary first):</p> <p>5. State #1: <u>ME</u></p> <p>6. State #2: _____</p> <p>7. Type of Project License: Major <input checked="" type="checkbox"/> Minor <input type="checkbox"/> ? (check one) <u>1000 KW</u></p>	<p><b>Complete the following for each development if more than one.</b></p> <p>8. Reservoir Surface Area at Normal Pool (acres): <u>68</u></p> <p>9. Shoreline Miles at Normal Pool: <u>9.0</u></p> <p>10. Percent of Shoreline Available for Public Use: <u>&lt;1%</u></p> <p>11. Data Collection Methods (enter percent for each method used; total must equal 100%):</p> <p>_____ traffic count/trail count</p> <p>_____ attendance records</p> <p><u>25%</u> staff observation</p> <p><u>75%</u> visitor counts or surveys</p> <p><u>75%</u> estimate (explain) <u>EXTRAPOLATION BASED ON OBSERVATIONS</u></p>	
<p>For 2014, enter only the licensee's annual recreational construction, operation, and maintenance costs for the development (project). Also, enter the annual recreational revenues for that year.</p>		
Item	Licensee's Annual Recreation Costs and Revenues (In Whole Dollars)	
	Construction, Operation and Maintenance Costs	Recreation Revenues for Calendar Year
12. Dollar Values	<u>ANAL. ESTIMATE \$1000</u>	<u>\$0</u>
<p>13. Length of Recreation Season: Summer: From (MM/DD) <u>04/15</u> To <u>10/15</u> Winter: From (MM/DD) <u>N/A</u> To _____</p>		
Period	Number of visits to all recreational areas at development/project (in Recreation Days)	
	Annual Total	Peak Weekend Average (see Glossary)
14. Daytime	<u>2000</u>	<u>50</u>
15. Nighttime	<u>0</u>	<u>0</u>

Respondent Certification: The undersigned certifies that he/she examined this report; and to the best of his/her knowledge, all data provided herein are true, complete, and accurate.

Jeffrey D. LaCasse  
Legal Name  
J.D. LaCasse  
Signature

GENERAL MANAGER  
Title  
APRIL 28, 2015  
Date Signed

207-872-2763  
Area Code/Phone No.  
2014  
Reporting Year Ending

Title 18 U.S.C.1001 makes it a crime for any person knowingly and willingly to make to any Agency or department of the United States any false, fictitious or fraudulent statement or misrepresentation as to any matter within its jurisdiction.



## Licensed Hydropower Development Recreation Report

**Schedule 2. Inventory of Publicly Available Recreation Amenities Within the Project Boundary**

16. Enter data for each Recreation Amenity Type (a). For User Free (b) and User Fee (c) enter the number of publicly available recreation amenities, located within the project boundary, regardless of provider. For FERC Approved (d) enter the number of amenities identified under User Free (b) and User Fee (c) for which the licensee has an ongoing responsibility for funding or maintenance (see Glossary for further detail). For Capacity Utilization (f), of the total publicly available amenities (b) + (c), compare the average non-peak weekend use (see Glossary) for each recreation amenity type (during the recreation season, with the highest use, reported on Schedule 1, Item 13) with the total combined capacity of each amenity type and enter a percentage that indicates their overall level of use. For example, if all public boat launches are used to half capacity during the non-peak weekend days, enter 50% (should use exceed capacity for an amenity type, enter the appropriate percentage above 100).

Recreation Amenity Type (a)	Number of Recreation Amenities			Total Units (e)	Capacity Utilization (%) (f)
	User Free (b)	User Fee (c)	FERC Approved (d)		
<b>Boat Launch Areas.</b> Improved areas having one or more boat launch lanes (enter number in column e) and are usually marked with signs, have hardened surfaces, and typically have adjacent parking.	1		1	1 Lanes	40%
<b>Marinas.</b> Facilities with more than 10 slips on project waters, which include one or more of the following: docking, fueling, repair and storage of boats; boat/equipment rental; or sell bait/food (see Glossary FERC approved).				N/A	
<b>Whitewater Boating.</b> Put-ins/Take-outs specifically designated for whitewater access.				N/A	
<b>Portages.</b> Sites designed for launching and taking out canoes/kayaks and the improved, designated, and maintained trails connecting such sites (enter length of trail in column e).				Feet	
<b>Tailwater Fishing.</b> Platforms, walkways, or similar structures to facilitate below dam fishing.				N/A	
<b>Reservoir Fishing.</b> Platforms, walkways, or similar structures to facilitate fishing in the reservoir pool or feeder streams.				N/A	
<b>Swim Areas.</b> Sites providing swimming facilities (bath houses, designated swim areas, parking and sanitation facilities).				Acres	
<b>Trails.</b> Narrow tracks used for non-automobile recreation travel which are mapped and designated for specific use(s) such as hiking, biking, horseback riding, snowmobiling, or XC skiing (excludes portages, paths or accessible routes; See Glossary).				Miles	
<b>Active Recreation Areas.</b> Playground equipment, game courts/fields, golf/disc golf courses, jogging tracks, etc.				Acres	
<b>Picnic Areas.</b> Locations containing one or more picnic sites (each of which may include tables, grills, trash cans, and parking).				Sites	
<b>Overlooks/Vistas.</b> Sites established to view scenery, wildlife, cultural resources, project features, or landscapes.				Acres	
<b>Visitor Centers.</b> Buildings where the public can gather information about the development/project, its operation, nearby historic, natural, cultural, recreational resources, and other items of interest.				N/A	
<b>Interpretive Displays.</b> Signage/Kiosks/Billboards which provide information about the development/project, its operation, nearby historic, natural, cultural, recreational resources, and other items of interest.				N/A	N/A
<b>Hunting Areas.</b> Lands open to the general public for hunting.				Acres	
<b>Winter Areas.</b> Locations providing opportunities for skiing, sledding, curling, ice skating, or other winter activities.				Acres	
<b>Campgrounds.</b> Hardened areas developed to cluster campers (may include sites for tents, trailers, recreational vehicles [RV], yurts, cabins, or a combination, but excludes group camps).				Acres	N/A
<b>Campsites.</b> Sites for tents, trailers, recreational vehicles [RV], yurts, cabins, or a combination of temporary uses.				N/A	
<b>Cottage Sites.</b> Permanent, all-weather, buildings rented for short-term use, by the public, for recreational purposes.				N/A	
<b>Group Camps.</b> Areas equipped to accommodate large groups of campers that are open to the general public (may be operated by public, private, or non-profit organizations).				Sites	
<b>Dispersed Camping Areas.</b> Places visitors are allowed to camp outside of a developed campground (enter number of sites in column e).				Sites	
<b>Informal Use Areas.</b> Well used locations which typically do not include amenities, but require operation and maintenance and/or public safety responsibilities					
<b>Access Points.</b> Well-used sites (not accounted for elsewhere on this form) for visitors entering project lands or waters, without trespassing, for recreational purposes (may have limited development such as parking, restrooms, signage).				N/A	
<b>Other.</b> Amenities that do not fit in the categories identified above. Please specify (if more than one, separate by commas):					



Federal Energy Regulatory  
Commission (FERC)  
FERC Form 80

## Licensed Hydropower Development Recreation Report

Form Approved  
OMB No. 1902-0106  
Expires: 09/30/2010  
Burden 3.0 hours

This form collects data on recreational resources at projects licensed by the Federal Energy Regulatory Commission under the Federal Power Act (16 USC 791a-825r). This form must be submitted by licensees of all projects except those specifically exempted under 18 CFR 8.11 (c). Submit this form on or before April 1, 2009. Submit subsequent filings of this form on or before April 1, every 6th year thereafter (for example, 2015, 2021, etc.). Submit an original and two copies of the form to the Commission's Regional Office (specified in the cover letter to this form). The public burden estimated for this form is three hours per response, including the time for reviewing instructions, searching existing data sources, gathering and maintaining the data needed, and completing the collection of information. Please send your comments about this burden estimate, or any other aspect of this collection of information, including suggestions to reduce the burden, to: Director, Division of Hydropower Administration and Compliance, Federal Energy Regulatory Commission, 888 First Street NE, Washington, D.C. 20426 and the Office of Information and Regulatory Affairs, Desk Officer-FERC, Office of Management and Budget, Washington, D.C. 20503.

Failure to comply with this collection of information will not result in a penalty, if you were unaware that a valid control number assigned by the Office of Management and Budget must be displayed on this collection of information.

### Instructions:

- a. All data reported on this form must represent recreational facilities and services located within the development/project boundary.
- b. To ensure a common understanding of terms, please refer to the Glossary on page 3.
- c. Report actual data for each item. If actual data are unavailable, then please estimate.

### Schedule 1. General Information

1. Licensee Name: <u>KENNEBEC WATER DISTRICT</u> 2. Project Name: <u>AUTOMATIC PROJECT</u> 3. Project Number: <u>2555</u> 4. Development Name: <u>MESSALONSICKE 4</u>	8. Reservoir Surface Area at Normal Pool (acres): <u>68</u> 9. Shoreline Miles at Normal Pool: <u>10</u> 10. Percent of Shoreline Safely Accessible to the General Public by Land Travel without Trespassing: <u>5%</u>
States Development/Project Traverses (List state with largest area within the development/project boundary first):  5. State #1: <u>ME</u> 6. State #2: _____	11. Data Collection Methods (enter percent for each method used; total must equal 100%):  _____ traffic count/trail count _____ attendance records <input checked="" type="checkbox"/> staff observation <u>50%</u> <input checked="" type="checkbox"/> visitor assessment <input checked="" type="checkbox"/> estimate <u>50%</u>
7. Type of Project License: Major _____ Minor <input checked="" type="checkbox"/>	
For the previous calendar year, enter only the licensee's annual recreational construction, operation, and maintenance costs for the development (project). Also, enter the corresponding annual recreational revenues.	
Item	Licensee's Annual Recreation Costs and Revenues (In Whole Dollars)
	Construction, Operation and Maintenance Costs      Recreation Revenues for Calendar Year
12. Dollar Values	<u>\$0</u> <u>\$0</u>
13. Length of Recreation Season Summer: From (MM/DD) <u>04/01</u> To <u>10/31</u> Winter: From (MM/DD) <u>11/1</u> To <u>3/31</u>	
Period	Number of visits to all recreational areas at development/project (in Recreation Days)
	Annual Total      Peak Weekend Average
14. Daytime	<u>15,180</u> <u>450</u>
15. Nighttime	

Respondent Certification: The undersigned certifies that he/she examined this report; and to the best of his/her knowledge, all data provided herein are true, complete, and accurate.

Jeffrey D. LaCasse  
Legal Name  
J. D. LaCasse  
Signature

General Manager  
Title  
May 1, 2009  
Date Signed

207-872-2763  
Area Code/Phone No.  
2008  
Reporting Year Ending

Title 18 U.S.C.1001 makes it a crime for any person knowingly and willingly to make to any Agency or department of the United States any false, fictitious or fraudulent statement or misrepresentation as to any matter within its jurisdiction.



Licensed Hydropower Development  
Recreation Report

Page 2 of 3

## Schedule 2. Inventory of Recreational Resources

16. Enter data for each Recreational Resource Type (a). For Facility Capacity (f), of total available resources (b) + (c), compare the average total amount of weekend use (during the recreation season reported on Schedule 1, item 13) with the total combined capacity of these resources to handle such use and enter a percentage that indicates their overall level of use. Do not consider peak weekend use (see Glossary). For example, if all available Boat Ramps are used to half capacity during non-peak weekend days, enter 50%. For all available Boat Ramps that are used beyond their combined capacity, enter the appropriate percentage above 100.

Recreational Resource Type (a)	No. of Available Resources			Total Miles/Acres (e)	Facility Capacity (percent) (f)
	User Free (b)	User Fee (c)	No. FERC Approved Resources (d)		
Access Areas. (No Facilities). Unimproved but well-known/popular sites which can be used to reach development/project waters (including waters below a dam) without trespassing on other property. Such areas can be used for launching boats, fishing, swimming, or other water recreational purposes.	2			N/A	<10%
Boat Launch Areas. Improved areas having one or more boat launching lanes and (a) are usually marked with signs, (b) have compacted gravel or concrete surfaces, and (c) usually have adjacent parking lots.	1		1	N/A	50%
Boat Launch Lanes. The number of lanes are determined by the total number of boats that can be launched easily at the designated boat launch areas at one time.				N/A	
Marinas. Public and Private facilities on or adjacent to the development/project waters for the docking, fueling, repair and storage of boats, and which may rent boats and equipment, or sell bait or food.				Acres	
White Water Boating. Access areas below a dam that can be used for rafting/kayaking.				N/A	
Canoe Portages. Site located above and below a dam, diversion, or other obstruction where persons can launch and take out canoes; and the improved, designated, and maintained trails connecting such sites.				Miles	
Tailwater Fishing Facilities. Platforms, walkways, or similar structures to facilitate below-dam fishing.	1			N/A	<5%
Fishing Piers. Structures which are installed and maintained in development/project waters specifically for fishing. This code excludes tailwater fishing facilities.				N/A	
Parks. Designated areas which usually contain multiple use facilities (e.g., picnic sites, playgrounds, swimming beaches, and boat ramps). Individual facilities within each park should be reported under the appropriate resource type (e.g. playground areas, picnic areas, etc.)				Acres	
Playground Areas. Have playground equipment, game courts/fields, jogging tracks, etc.				Acres	
Trails. Improved pathways used for non-automobile recreational travel which (a) can be located on a reference map, and (b) are designated according to type of use (hiking, bridle, trail bikes, snow mobiles, cross-country skiing). This category excludes canoe portages.	2			Miles 2	1%
Swimming Areas. Sites providing access to development/project waters where swimming facilities (bath houses, designated swim areas, parking, and sanitation facilities) are available.				Acres	
Picnic Areas. Areas designated and maintained for picnicking and which contain one or more picnic sites, each of which includes a picnic table and in some cases cooking grills, trash receptacles, and a parking area.				Acres	
Wildlife Areas. Natural areas and reserves specifically created and managed for the protection and propagation of wildlife and the viewing of wildlife in their natural habitat.				Acres	
Visitor Centers. Facilities located in a kiosk, pavilion or similar structure from which persons may obtain information about the development/project, its operation, recreational facilities, and related items of interest.				N/A	
Interpretive Displays. Facilities (exhibits and museums) which describe or explain archaeological, historic, or prehistoric objects, structures, sites, areas, activities, artifacts, and materials.				N/A	
Overlooks. Public areas to view natural areas/project features (e.g., pull-offs or vistas).				Acres	<25%
Hunting Areas. Public or private areas open to the general public for hunting.	1			68 Acres	
Golf Courses. All types of golf areas, except miniature golf.				Acres	
Cottages/Cabin Sites. Recreational dwellings which are seasonally rented by the public for recreational purposes.				N/A	
Camping Areas/(Campgrounds) Areas containing two or more campsites, tent sites, or trailer/recreational vehicle (RV) sites which accommodate overnight camping. This category does not include group camps.				Acres	
Tent/Trailer/RV Sites. The total number of sites within Camping Areas that have been specifically developed for tent, trailer, or RV use. This category does not include sites within group camps.				Acres	
Organizational Camps. Camping areas that are maintained and operated by a specific entity but which may be used by other persons or groups (scout camps, military base recreation camps, church camps, handicapped children camps).				Acres	
Group Camps. Camping areas which are equipped with facilities to accommodate use by the general public. These areas usually require registration or advance reservation.				Acres	
Winter Sports. Any facility or site providing sports like skiing, sledding, ice skating, or ice fishing.				N/A	
Other - such as informal/dispersed camping areas, unimproved trails, etc. (specify):				N/A	

Document Content(s)

Cover letter for FERC rec filings 2016.DOCX.....1-1

Recreation Report 2015.DOCX.....2-5

2009 Recreation Report for Automatic Project.DOCX.....6-7

2004 Recreation report.DOCX.....8-9

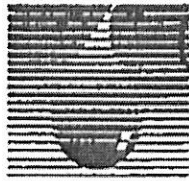
Regulator comment solicitation letter.DOCX.....10-11

2015 Recreation Report Photographs.DOCX.....12-15

FERC form 80 2014.PDF.....16-17

FERC form 80 2008.PDF.....18-19





ORIGINAL

# KENNEBEC WATER DISTRICT

OFFICE OF SECRETARY  
60 JUN -8 PM 4:21  
FEDERAL ENERGY  
REGULATORY COMMISSION

**Jeffrey LaCasse**

General Manager/Supervisor

P.O. Box 350

5 South St.

Waterville, ME

04903-0356

Tel • 207-870-2763

Fax • 207-870-2764

Federal Energy Regulatory Commission

Attn: Secretary David P. Boergers

OHL -11.1

Washington, D.C. 20426

May 30, 2000

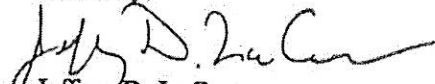
Dear Secretary Boergers,

The Kennebec Water District is required to submit specific plans relating to its operation of the Automatic Project hydroelectric plant on Messalonskee Stream in Waterville, Maine. This is FERC project 2555. Enclosed with this letter are proposed plans for streamflow monitoring, water quality monitoring, recreational monitoring, and recreational upgrades. Several related documents are also included as required.

All required agencies have been contacted. Some have responded with comments, many have not. Kennebec Water District used many of the comments that were presented during the Environmental Impact Statement stage of the licensing process to guide it in its formulation of perspective in its plan development.

These plans have been sent for FERC review and approval. If there is any additional information necessary, the Kennebec Water District staff will promptly supply that information. Electronic correspondence may be through [jlacasse@wrvl.net](mailto:jlacasse@wrvl.net).

Sincerely,

  
Jeffrey D. LaCasse

## Board of Trustees

David M. Bior

Courtney S. Bloor

Stephen C. Crate

Pauline R. Daniels

Iona French

William Hogeny

Daniel A. Peters

Gerald I. Robbins

J. Michael Talbot

Raymond Wilton

First Water District

in the United States

Supplying:

Waterville, Winslow,

Benton, Fairfield &

Yassalboro

FERC-DOCKETED

JUN 08 2000

000614-D154-3

**Automatic Project (M4)  
FERC Project No. 2555  
Messalonskee Stream**

**Kennebec Water District**

**RECREATION PLAN**

**Automatic Project (M4)  
FERC Project No. 2555  
Messalonskee Stream**

**Kennebec Water District**

**RECREATION PLAN**

**Introduction**

Messalonskee Stream is a small tributary of the Kennebec River and is situated in Waterville and Oakland, Maine. The Automatic Project is on the Messalonskee Stream in a residential area of Waterville. The upstream impoundment winds around the campus of Colby College and extends to the tailwaters of another hydropower station, the Rice Rips Project.

The Automatic dam impounds approximately 900 acre-feet. It extends 4.5 miles upstream from the dam and has a surface area of approximately 68 acres.

As the impoundment extends upstream from the Automatic Project's dam, it gradually leaves the residential area for a more rural, wooded course. The impoundment is relatively narrow with shallow waters. The average width is about 160 feet with typical depths of 5 to 10 feet.

The impoundment shoreline is vegetated with lush communities of emergent and submergent plants. Additional shoreline cover is provided by overhanging trees, logs, and branches. Several small streams enter the impoundment, the largest of which is Fish Brook.

The Automatic Project impoundment contains several varieties of fish (primarily warmwater varieties), as well as duck, otter, muskrat, various birds, deer, an occasional moose, beaver, and other indigenous wildlife.

**Background**

Present recreational use of the Automatic Project is limited. The impoundment does move from a residential area through a rural area, however, and, as a result, recreational opportunities and uses vary.

In residential Waterville, the carry-in boat access at the North Street complex is the primary entrance point to the stream, although some access is gained on the north side of the North Street Bridge just a few hundred past the entrance to the North Street carry-in access. There is some fishing activity, especially in spring and early summer.

Along the rural portion of the impoundment, the shoreline is primarily undeveloped. There are a few informal boat access points. There is some non-motorized boating activity including rowing, canoeing, kayaking, and paddle boating. There is also

some four-wheeler activity within the impoundment through trails in the wooded areas. In winter, there is some snowmobile and cross-country skiing activity in the woods along the impoundment area. In all seasons, there is nature hiking.

## Requirements

Article 407 of the FERC licensing order addresses recreation in the Automatic Project impoundment. The article requires the Kennebec Water District to file with the Commission "*a plan showing existing recreational development and indicating the entities responsible for operation and maintenance of the facilities for the Automatic Project. The plan shall also provide for construction of improvements to the parking area at the North Street Park, or for an alternate access location, and for monitoring and reporting on recreation use. The plan shall provide for, but need not be limited to: (1) final site plans for the facilities cited above; (2) erosion and sediment control during construction; and (3) an implementation schedule.*"

This plan's focus will be on:

- (1) Upgrading the project identification features
- (2) Developing the carry-in boat access site at the North Street Park
- (3) Developing a plan to monitor and record recreational use of the impoundment
- (4) Assessing the future needs for recreation based on accumulated data

Through its monitoring of past recreational use in the Automatic Project impoundment, the Kennebec Water District concluded that the best way to meet the needs for access to the impoundment was by improving the parking at the North Street Park. Development of an additional carry-in site was not deemed necessary at this time.

## Kennebec Water District's Recreation Plan

### (1) Upgrading the project identification features

With the change in ownership of the Automatic Project in 1995 from a joint ownership between Central Maine Power and the Kennebec Water District to the sole ownership of the Kennebec Water District combined with the subsequent issuance of the FERC licensing order, a need for upgraded project identification signage is necessary. New signage identifying the Automatic Project as owned and maintained by the Kennebec Water District, will be added to the project site. One sign will be prominently affixed next to the powerhouse in approximately the same location as the former licensee's identification. Another sign will be displayed on the opposite side of the stream (East side), on Kennebec Water District property on South Street. The signs will contain a phone number to Kennebec Water District operations for tours or information.

**(2) Developing the carry-in boat access site at the North Street Park**

The existing carry-in boat access site at the North Street Park is adequate in size for the level of activity it receives during the year. The primary problems with the site are safety related. With no off road parking facilities, users are forced to load and unload boating gear in the street right-of-way. This activity presents potential hazards to both users and drivers. To allow safe use of this site, the Kennebec Water District will develop off-road parking that will provide safe access and egress at the carry-in spot.

The improvement plan is relatively simple. No disturbance will be made to the sloped shoreline area where entry to the water is made. A paved lot designed to accommodate five (5) vehicles will be added on the property next to the street. A new curb cut will be added to allow adequate expanse for safe entry to the parking area. The parking lot will be wide enough to allow vehicles to turn freely and to park without hazard. Access to the shore by vehicle will be restricted by the placement of wooden bollards spaced across the sloped entry area. The spacing will allow easy access for carry-ins, but will not allow normal vehicle passes. The bollards will be designed to allow removal by authorized members of the City of Waterville, the Waterville Sewerage District, or the Kennebec Water District to access their streamside facilities. Some trees will be added to the site to add segregation from the remainder of the Park. The trees' variety and location will be by authority of the City of Waterville Parks and Recreation Department.

The construction of the parking area will be designed to maximize sedimentation and erosion control both during and after construction. The proposed parking area is relatively flat and erosion should be easily contained. The entry point to the stream is a grassy slope and will remain untouched. On the stream side of the bollard placement, a silt fence will be placed during construction. The silt fence will be installed as per typical construction method, with the base of the containment fabric buried. Hay bales will be placed as necessary for diversion and damming to protect against erosion runoff into stream. The bollard placement should aid in ongoing erosion control by providing a restriction that will stop unauthorized vehicles from entering the more sensitive area next to the stream.

Approval for this plan is expected in the summer or fall of 2000. Depending on the exact approval date, the parking project will be completed either in late summer/early fall of 2000 or in spring of 2001. The availability of adequate construction materials and construction time to complete the project will be the primary deciding factors on the installation timing. Paving plants typically close in November and paving contractors are usually booked heavily at the end of the paving season.

A copy of the proposed layout for the parking area at the carry-in access point is attached with this document. A cross section of a typical silt fence installation is also attached as part of that layout.



(3) **Developing a plan to monitor and record recreational use of the impoundment**

*Article 408 of the Commission's License Issue Order requires that "the licensee shall prepare a plan to monitor recreational use of the Automatic Project to determine whether existing access facilities and the new facilities required in Article 407 are meeting public use demands without harm to wetlands and wildlife. The plan shall provide for monitoring the effects of recreational use at the project and filing a monitoring report concurrently with the Form 80, Recreation Report, starting with the Form 80 report due in 2004."*

In order to properly gauge use of the recreational facilities within the Automatic Project impoundment, a monitoring and evaluation program will be developed. This program's goals will be to assess the degree of use and to determine, through consultation with other agencies, if the available facilities are adequate.

The monitoring program will include several components:

**a). Frequency.** Recreational use monitoring will be conducted in three ways. First, any recreational activity that is observed at any time by a member of the Kennebec Water District's Automatic Project operating team will be monitored and recorded. Automatic Project operating team members who inspect the Project on weekend days and after regular working hours will be assigned to conduct a monitoring check on the impoundment to record any observed recreational use. In addition to the regular workday, M-4 operations typically require operating personnel to visit the station at least one time daily between 4:30 PM and 11:00 PM except in periods of shutdown. Second, there will be regularly scheduled tours of the impoundment by Kennebec Water District personnel to assess and record recreational activity. An inspection of the impoundment's recreational use will be added to the regular rounds of Kennebec Water District personnel who are assigned to collect distribution water quality samples from the Kennebec Water District system. These collections are one to two times per week, during regular workday hours. Distribution collection personnel typically work from 6:30 AM to 3:00 PM during spring through fall months and 7:00 AM to 3:30 PM the remainder of the year. Third, during shutdown periods, KWD will monitor recreational use at least once during each workweek between the hours of 5:00 PM and 9:00 PM. By utilizing these three procedures, KWD should be able to collect a representative recreational use pattern within the impoundment.

**b). Monitored activities.** Activities within the impoundment include both community or large group activities and individual or small group activities. All activities that may fall within a broad recreational scope will be recorded. Recreational activities to be monitored will include, but not be limited to, boating, fishing, picnicking, camping, swimming, hunting, skiing, sight-seeing,

snowmobiling, and four-wheeling. Except for recreational use at the carry-in boat access, recreation will not be monitored or recorded by KWD for use of the North Street Park.

**c). Observers.** Monitoring and recording observers will be Kennebec Water District personnel. As specified under "a). Frequency," recreational use data will be accumulated based on a combination of scheduled and random observations.

As data is accumulated throughout each year, other sources of data collection such as the records of the City of Waterville Parks and Recreation department will also be considered. Using all available data sources will allow a truer picture of recreational use within the impoundment to be developed.

**d). Monitoring methods.** Monitoring will be conducted through two primary methodologies, observations and interviews. Ideally, individual recreation participants will be interviewed to collect first-hand information on activities and participants. If participants are unavailable or unwilling to submit to an interview, the observer will make notes on observed activities. In both methodologies, a standard form will be used. A comment section will be available for the addition of the observer's personal comments.

**e). Monitoring data.** Data to be accumulated by the monitoring observer will include, but not be limited to:

- a. the date and time of the observance
- b. the site of the observance
- c. the type of activity
- d. the number of participants
- e. the number of cars, boats, snowmobiles, four-wheelers, or other craft involved
- f. the resident municipality of the participants (if interviewed)
- g. concerns or comments of the participants (if interviewed)
- h. the name of the observer
- i. any noticeable damage to wetlands or wildlife due to the recreation activity
- j. number of cars in carry-in access parking lot

**f). Compilation of data.** The collected observations will be compiled annually. Compilation will be completed at the beginning of each calendar year. On a six year rotation, beginning in 2004, a Form 80, Recreation Report, will be filed with the Commission.

**g). Data storage and analysis.** Data collected and compiled will be kept in storage at the Kennebec Water District offices in Waterville. Data will be analyzed annually and on a six-year basis to determine if the carry-in boat access site is adequate for the recreational use levels observed.

**(4) Assessing the future needs for recreation based on accumulated data**

The analysis of data collected through the recreational monitoring plan will be used by the Kennebec Water District and other interested agencies to determine if, in fact, the facilities are meeting the demands of the public for recreational use. A formal evaluation will be conducted at minimum each six years with the submission of Form 80 to the Commission. Copies of the report or of a summary of the report will be distributed to each interested entity for interpretation and comment. Comments will be evaluated for inclusion into the existing recreation plan. All comments not used in plan modification will be addressed by the Kennebec Water District, with any reason or reasons for failure to adopt to be answered with project specific information.



**Attachments**

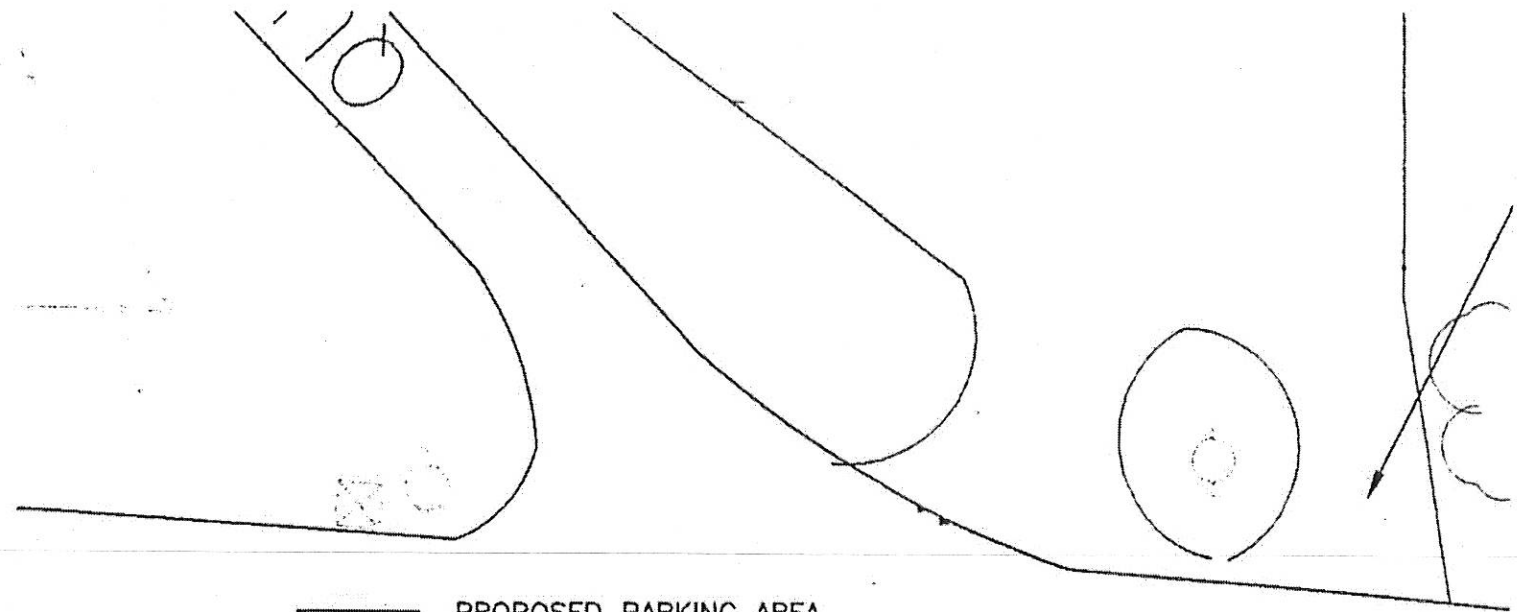
**To**

**Recreation Plan**

---

**Kennebec Water District**

1. **Drawing of proposed improvements to carry-in boat access for North Street Park**
2. **Proposed monitoring and recording form for recreational use of Automatic Project impoundment**



PROPOSED PARKING AREA

NORTH

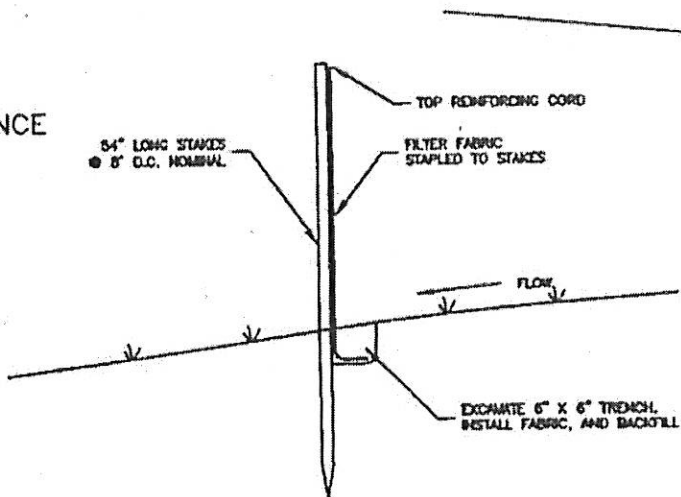
EXISTING TREE LINE

BOLLARDS AT 5' - 0" O.C. TO  
RESTRICT MOTOR VEHICLE PASSAGE  
(REMOVABLE FOR MAINTENANCE)

SILT FENCE FOR EROSION CONTROL

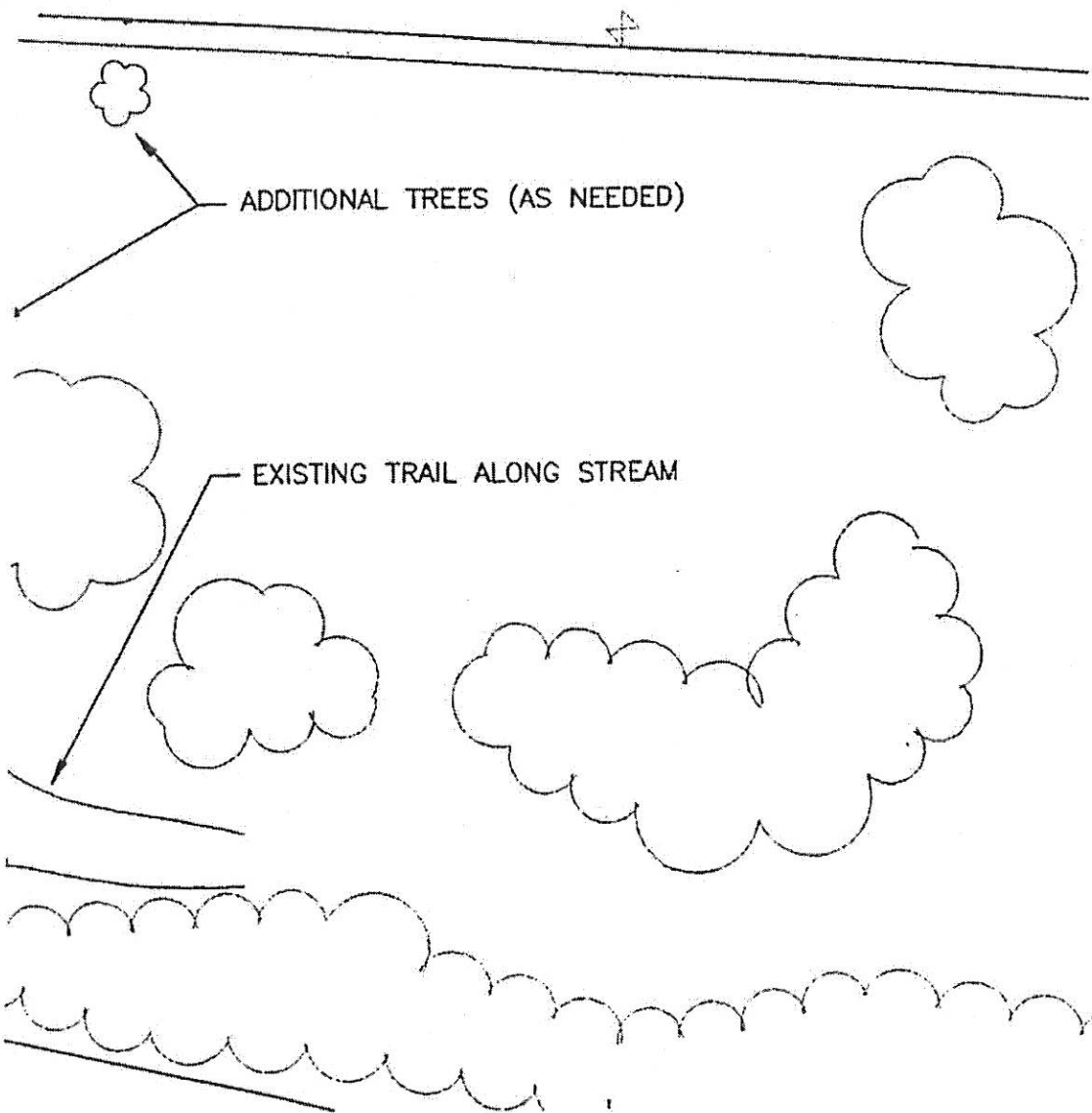
MAFC

EXISTING HOSPITAL ENTRANCE



EROSION CONTROL FENCE DETAIL  
NOT TO SCALE

STREET



APPROVALS		DATE	TITLE	JOB NO.	FERC -
DRAWN		3/30/00	KENNEBEC WATER DISTRICT CITY OF WATERVILLE NORTH STREET BOAT LAUNCH HAND CARRY WITH FIVE 9 X 18 PARKING SPACES	DWG NO.	1 of 1
CHECKED		3/30/00			
ENGR.		3/30/00			
			SCALE	DATE	
			- Reduced - Not to Scale	3/30/2000	

ATTACHMENT  
2

## Automatic Project (M-4)

### Recreation Monitoring Form

Date: \_\_\_\_/\_\_\_\_/\_\_\_\_

Time: \_\_\_\_\_

Observer's name: \_\_\_\_\_ (please add comments on back)

Site of observance: \_\_\_\_\_

Number of participants: \_\_\_\_\_

Type of activity in progress (check all that apply)

- |                                   |  |
|-----------------------------------|--|
| <input type="checkbox"/> Boating  | <input type="checkbox"/> Swimming                    |
| <input type="checkbox"/> Canoeing | <input type="checkbox"/> Nature walk                 |
| <input type="checkbox"/> Kayaking | <input type="checkbox"/> Cross country ski           |
| <input type="checkbox"/> Fishing  | <input type="checkbox"/> Snowmobile (number _____)   |
| <input type="checkbox"/> Hunting  | <input type="checkbox"/> Four wheeler (number _____) |
| <input type="checkbox"/> Picnic   | <input type="checkbox"/> Community activity          |
| <input type="checkbox"/> Camping  | <input type="checkbox"/> Other (list _____)          |
|                                   | <input type="checkbox"/> Other (list _____)          |

North Street Park carry-in access lot:

Number of cars \_\_\_\_\_ Number of boats \_\_\_\_\_ Number of people \_\_\_\_\_

Noticeable damage to wetlands or wildlife due to activity? Yes \_\_\_\_\_ No \_\_\_\_\_ (detail on back)

(If interview conducted):

Residence of recreation participants: \_\_\_\_\_

Participant comments: \_\_\_\_\_

**Automatic Project (M-4)**  
***Recreation Monitoring Form***

**OBSERVER COMMENTS:**

---

---

---

---

---

---

---

---

---

---

\_\_\_\_\_  
**Observer initials**

\_\_\_\_\_  
**Date**

## Know All Men by These Presents,

**That** THAYER HOSPITAL ASSOCIATES, a corporation duly organized and existing under the laws of the State of Maine and having a principal place of business in Waterville, County of Kennebec and State of Maine

in consideration of One Dollar and other valuable consideration  
(consideration being such that no revenue stamps are required)

paid by CITY OF WATERVILLE, a municipal corporation located in the County of Kennebec and State of Maine

does  
the receipt whereof it ~~do~~ hereby acknowledge, do hereby ~~release, release,~~  
~~release, sell and convey~~ and forever quit-claim unto the said CITY OF WATERVILLE

its successors ~~heirs~~ and assigns forever,  
a certain lot or parcel of land situated on North Street in said Waterville and bounded and described as follows, to wit:

Starting at the point where the westerly line of North Street intersects the easterly bank of the Messalonskee Stream thence southerly along the westerly line of North Street a distance of 1106 feet, more or less, to a point which is on the continuation of the northerly line of a proposed street, said street to be next northerly and approximately parallel to a street now existing called Johnson Heights, thence westerly along the continuation of the northerly line of said proposed street to the easterly bank of the Messalonskee Stream; thence northerly along the easterly bank of the Messalonskee Stream to the point of beginning. Said tract of land contains approximately 2.13 acres.

Excepting and reserving all rights and easements granted to the Waterville Sewerage District by indenture of the said City dated September 26, 1951 and recorded in Kennebec Registry of Deeds in Book 914, Page 458.

This conveyance is made upon the express condition that the land herein conveyed shall be used only as a public park and the City of Waterville shall be satisfied of this condition if the said land is used in its present natural state or is landscaped.

The above described parcel of land is the same as was this day conveyed to the said THAYER HOSPITAL ASSOCIATES by the said City of Waterville by deed not yet recorded.

To have and to hold the same, together with all the privileges and appurtenances thereunto belonging, to the said CITY OF WATERVILLE, its

successors ~~hereby~~ and assigns forever.

And it ~~do~~ covenant with the said Grantee, its successors ~~hereby~~ and assigns, that it will warrant and defend the premises to it the said Grantee, its successors ~~hereby~~ and assigns forever, against the lawful claims and demands of all persons claiming by, through or under it

In Witness Whereof, the said THAYER HOSPITAL ASSOCIATES has caused this instrument to be signed and its corporate seal to be affixed by

and

Jr.,  
Randolph Brandt, its Vice-President

wife ~~of the said~~

hereunto duly authorized ~~joining in this deed and grant, and relinquishing and conveying all rights by descent and all other rights in the above described premises, have hereunto set hand and seal~~ this fifteenth day of November in the year of our Lord one thousand nine hundred and fifty-one.

Signed, Sealed and Delivered  
in presence of

J. M. Bridges

THAYER HOSPITAL ASSOCIATES

By

Randolph Brandt Jr.  
its Vice-President

State of Maine, Kennebec ss.  
Personally appeared the above named  
of Thayer Hospital Associates,

November 15 1961.  
Jr.,  
Randolph Brandt, Vice-President

and acknowledged

the above instrument to be his free act and deed in his said capacity and the free act and deed of said corporation.

Before me,

J. M. Bridges

Justice of the Peace

UNITED STATES OF AMERICA  
FEDERAL ENERGY REGULATORY COMMISSION

Kennebec Water District

Project No. 2555-009

ORDER APPROVING RECREATION PLAN

(Issued August 24, 2000)

On June 8, 2000, Kennebec Water District, licensee for the Automatic Project, FERC No. 2555, filed a recreation plan pursuant to article 407 of the license.<sup>1</sup> The project is located on Messalonskee Stream, a tributary of the Kennebec River, in Kennebec County, Maine.

BACKGROUND

Article 406 requires the licensee to file with the Commission, for approval, a recreation plan showing existing recreational development and indicating the entities responsible for operation and maintenance of the facilities for the Automatic Project. The plan shall also provide for construction of improvements to the parking area at the North Street Park, or for an alternate access location, and for monitoring and reporting on recreation use. The plan shall include, but need not be limited to: (1) final site plans for the facilities cited above; (2) erosion and sediment control during construction; and (3) an implementation schedule.

The licensee shall prepare the plan after consulting with the Maine Department of Environmental Protection, Maine Department of Conservation, U.S. Fish and Wildlife Service, the city of Waterville, Waterville Conservation Commission, and Natural Resources Conservation Service. The licensee shall include with the plan documentation of consultation, copies of comments and recommendations on the completed plan after it has been prepared and provided to the consulted entities, and specific descriptions of how the entities' comments are accommodated by the plan. The licensee shall allow a minimum of 30 days for the entities to comment and to make recommendations prior to filing the plan with the Commission for approval. If the licensee does not adopt a recommendation, the filing shall include the licensee's reasons, based on project-specific information.

<sup>1</sup> See 88 FERC ¶ 61, 117 (1999).

Project No. 2555-009

-2-

The Commission reserves the right to require changes to the plan. No ground-disturbing or land-clearing activities for new or improved recreation facilities shall begin until the licensee is notified that the plan is approved. Upon approval, the licensee shall implement the plan, including any changes required by the Commission.

LICENSEE'S PROPOSAL

The licensee's plan includes a description of the project and its recreational use. It further includes a description of the improvements to the existing carry-in boat access at the North Street Park. The licensee states the existing carry-in boat launch is adequate in size for the level of activity, but it needs to upgrade the parking to provide safe access. The improved parking area will include a paved lot to accommodate five vehicles and will be wide enough to allow vehicles to turn freely. The licensee includes its proposal to prevent sedimentation and erosion before and after construction. The licensee proposes to begin construction in the late summer/early fall of 2000 depending on the weather and availability of supplies.

The licensee also described its proposal to monitor recreation facilities pursuant to articles 407 and 408. This monitoring program included a description of the frequency the facilities will be monitored, the activities that will be monitored, personnel, and the monitoring methods. The licensee will compile the data and file a report in conjunction with the FERC Form 80.

CONSULTATION

The licensee consulted with the appropriate agencies and incorporated the comments into the filing.

DISCUSSION AND CONCLUSION

The licensee's proposal meets the requirements of article 407. The improved parking at the North Street Park will provide adequate safe access for boaters. The recreation plan should be approved.

The licensee's monitoring program will provide the information needed to assess whether the facilities are meeting the recreational needs. The first report will be due by April 1, 2004. Subsequent reports should be filed in conjunction with the Commission's Form 80 due dates in 2009, 2015, etc.




The Director orders:

(A) The recreation plan for the Automatic Project, filed on June 8, 2000, is approved.

(B) The licensee shall construct the facilities by May 31, 2001. It shall file as-built drawings of the facilities for approval within 90 days of completing construction. These drawings shall show the recreation facilities and their location with respect to other project features including the powerhouse and project boundary, where applicable.

(C) The licensee shall file monitoring reports pursuant to article 408. The first report will be due by April 1, 2004. Subsequent reports shall be filed in conjunction with the Commission's Form 80 by April 1, 2009, 2015, etc.

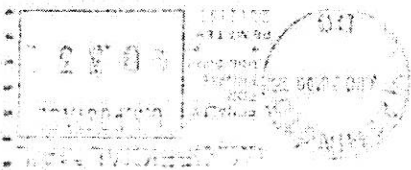
(D) This order constitutes final agency action. Requests for rehearing by the Commission may be filed within 30 days of the date of issuance of this order, pursuant to 18 C.F.R. § 385.713.

  
Hossein Ildari  
Division of Hydropower: Administration  
and Compliance

FEDERAL ENERGY REGULATORY COMMISSION  
WASHINGTON, D.C. 20426  
OFFICIAL BUSINESS  
PENALTY FOR PRIVATE USE, \$300

THOMAS J. BRAZIER  
PRESIDENT  
KENNEBEC WATER DISTRICT  
5 South St  
Waterville, ME 04901-5951

P-2555



04901+5951