

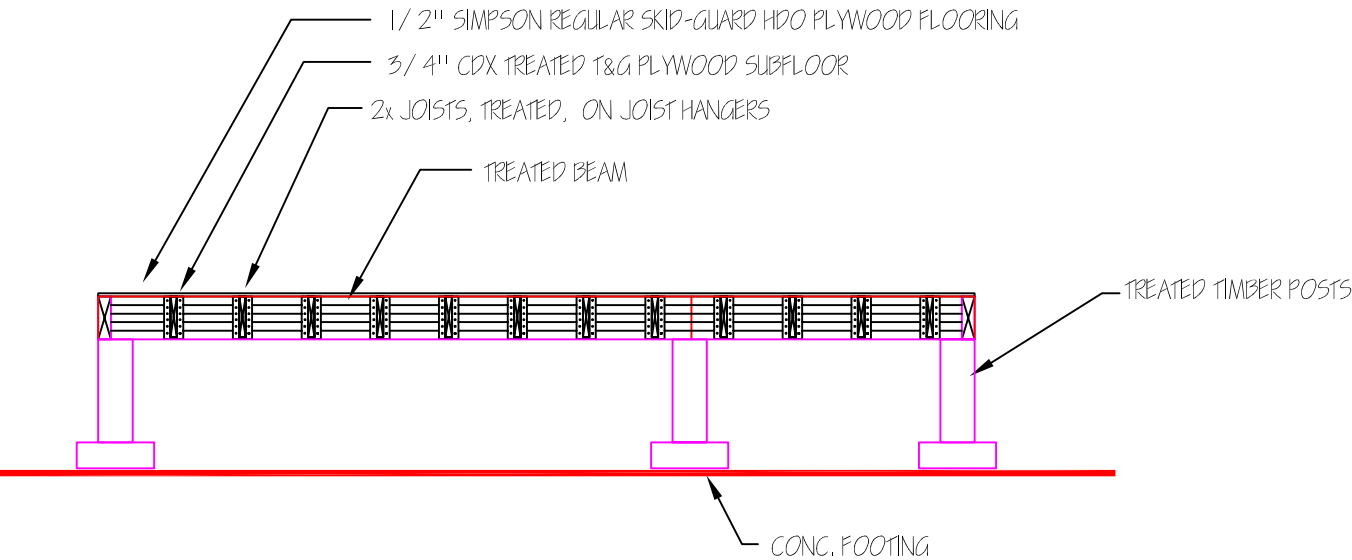
NOTES:

FOUNDATION DESIGN CONCEPTS

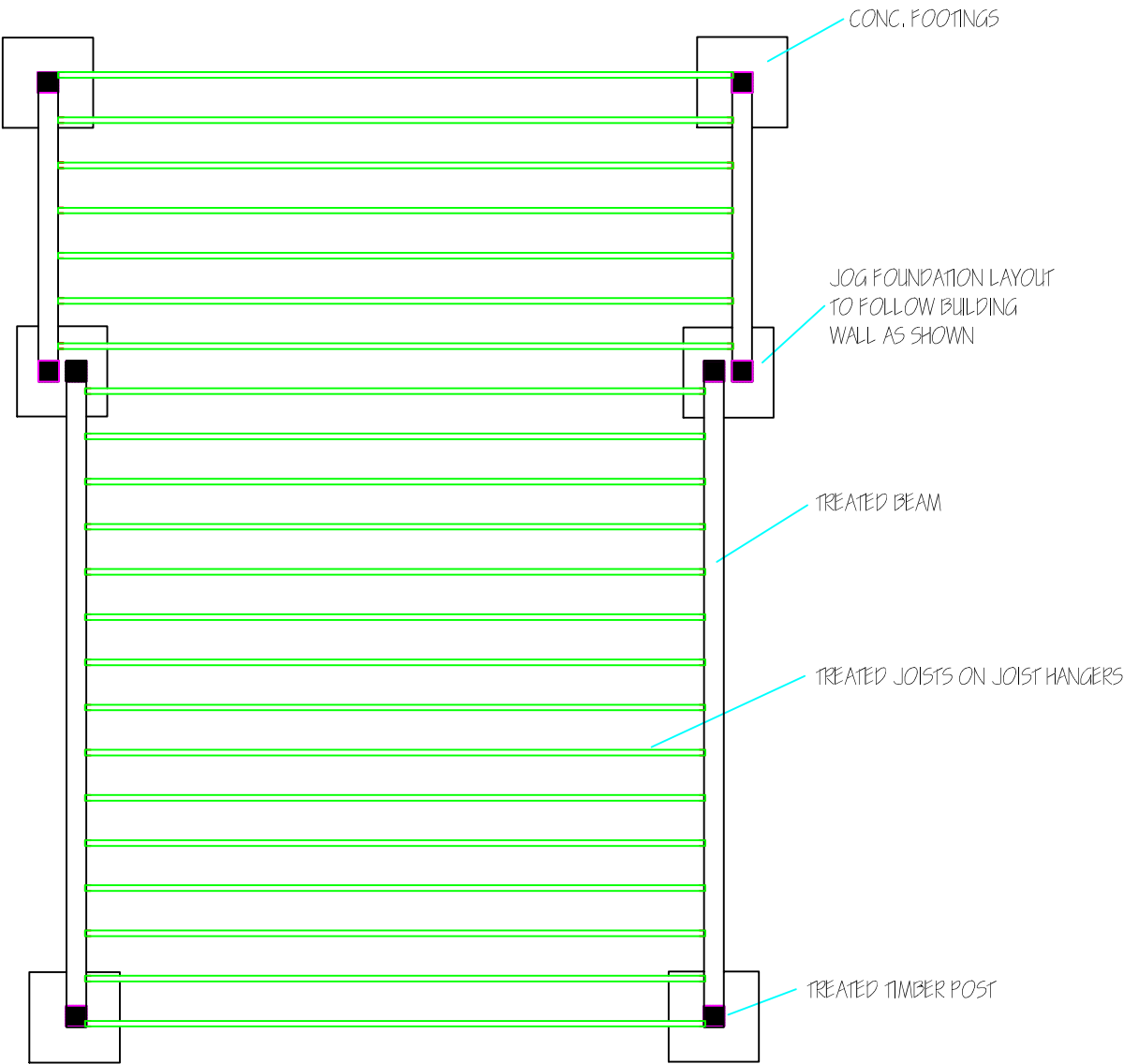
THIS IS A CONCEPTUAL DESIGN, THE CONTRACTOR IS REQUIRED TO SUBMIT A COMPLETE FOUNDATION DESIGN TO THE CO FOR APPROVAL. WHEN SUBMITTAL IS RECIEVED THE COR WILL WORK WITH ELEANOR OMAN TO GET FINAL REVIEW AND APPROVAL BY THE RO.

THE FOLLOWING CONCEPTUAL DESIGN IS SHOWN TO PROVIDE SOME GUIDELINES FOR DESIGN DEVELOPMENT:

- TO MINIMIZE HEIGHT OF BUILDING ABOVE GROUND FOR ACCESSIBILITY AND AESTHETIC REASONS, FLOOR JOISTS WOULD BE ON HANGERS BETWEEN TREATED BEAMS.
- SIZE BEAMS SO THEY ARE NOT TOO LARGE TO PLACE BY HAND, AND TO REQUIRE A MINIMUM NUMBER OF POSTS TO MINIMIZE EXCAVATION
- MDO PLYWOOD WOULD BE USED FOR FLOORING RATHER THAN CAR DECKING TO REDUCE COSTS AND SIMPLIFY MAINTENANCE. THE MDO WOULD BE UNDERLAYED WITH 3/ 4" TREATED PLYWOOD TO SIMPLIFY REPLACEMENT OF DAMAGED HDO.

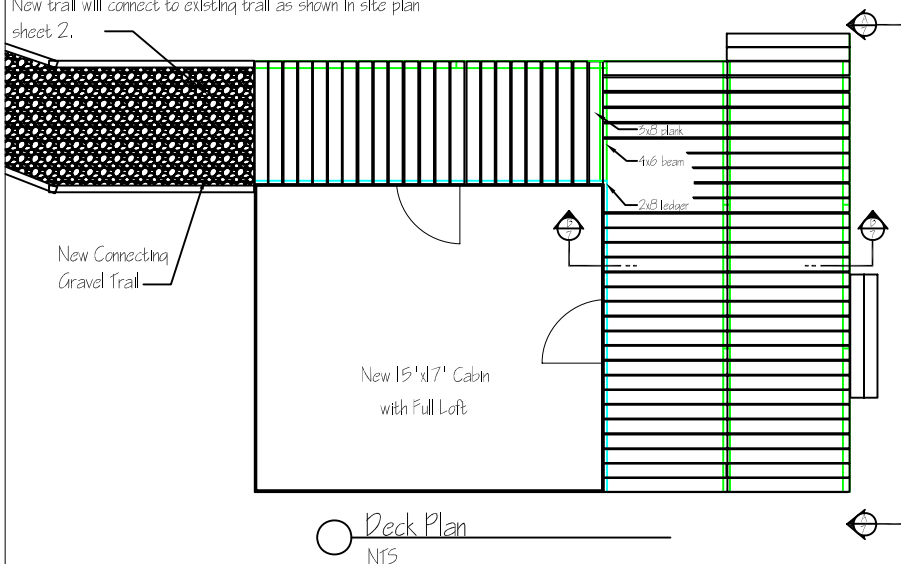


FOUNDATION CONCEPT-SECTION

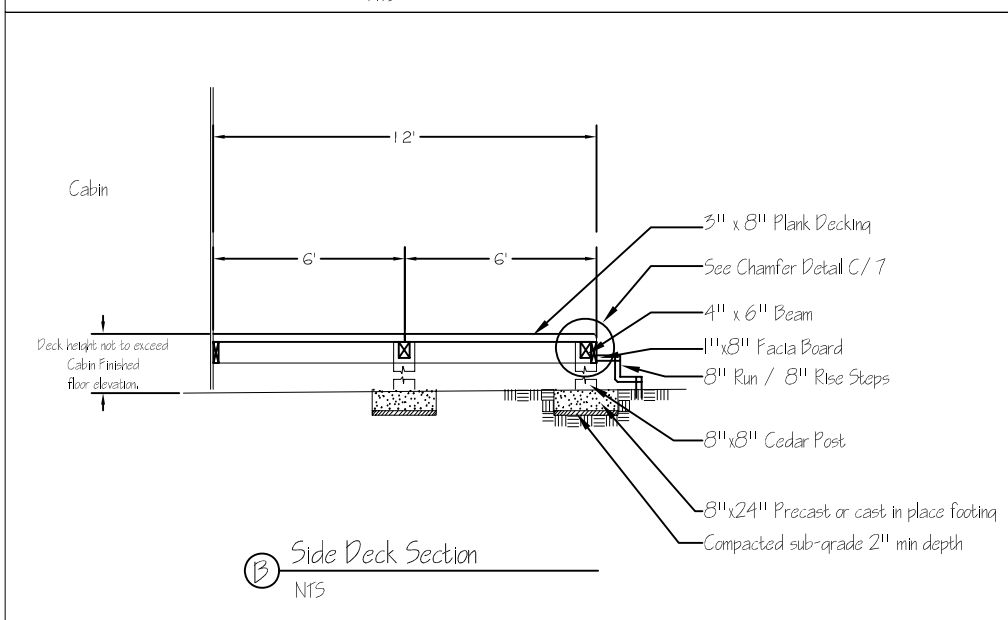
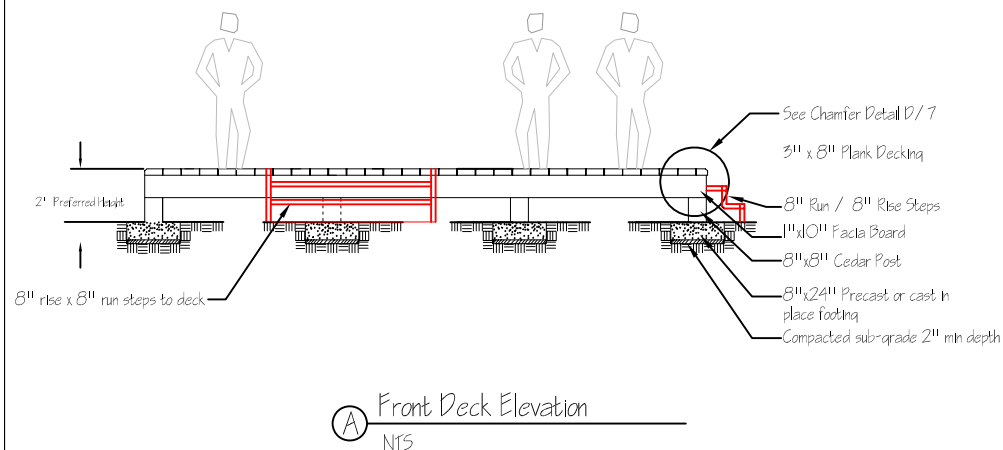


CONCEPTUAL FOUNDATION - PLAN

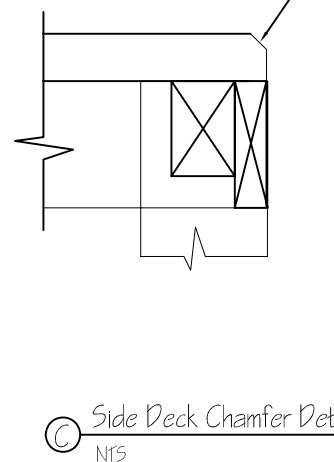
Note: As shown, deck is to terminate at existing grade and meet new gravel trail.
New trail will connect to existing trail as shown in site plan sheet 2.



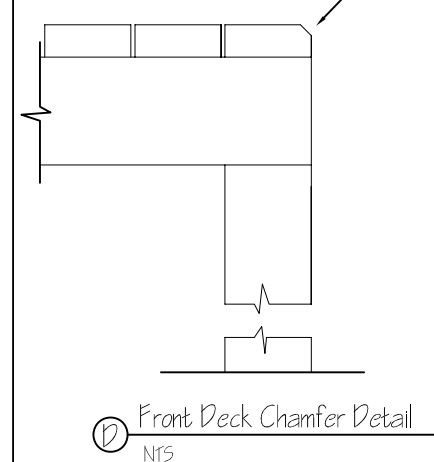
Note:
Deck is to be constructed by locally milled
Alaska Yellow Cedar from Prince of Wales Island.

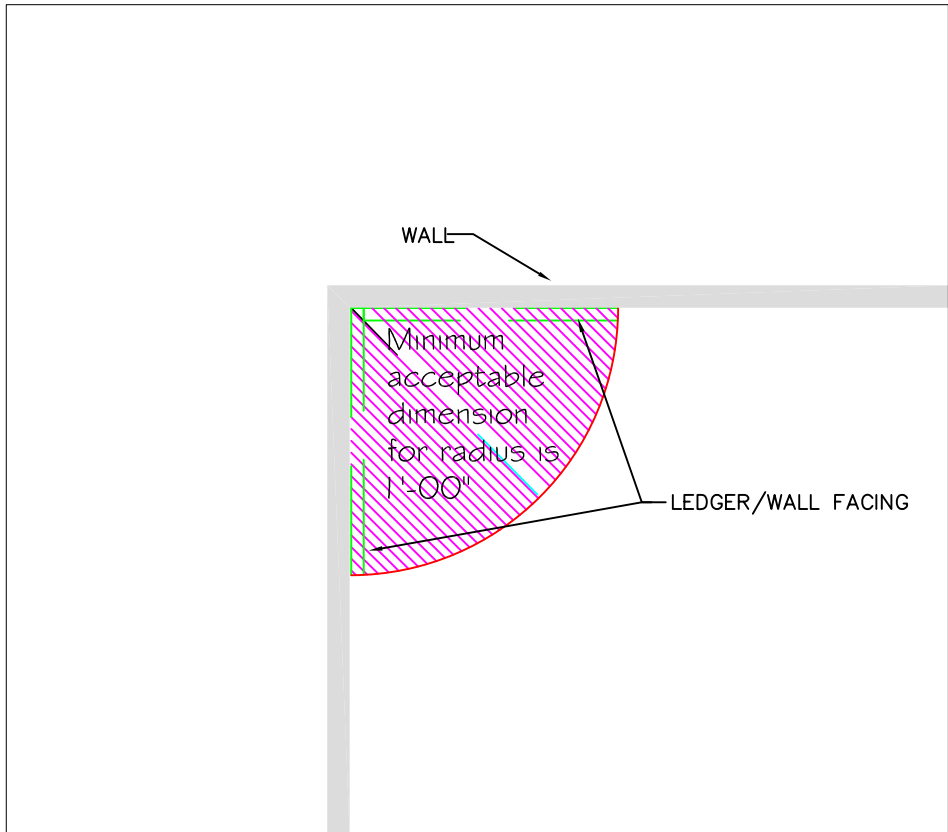


Note:
Chamfer entire length and sides of deck
with router as shown after deck assembly is
complete. Chamfer 1" x 45 degrees.

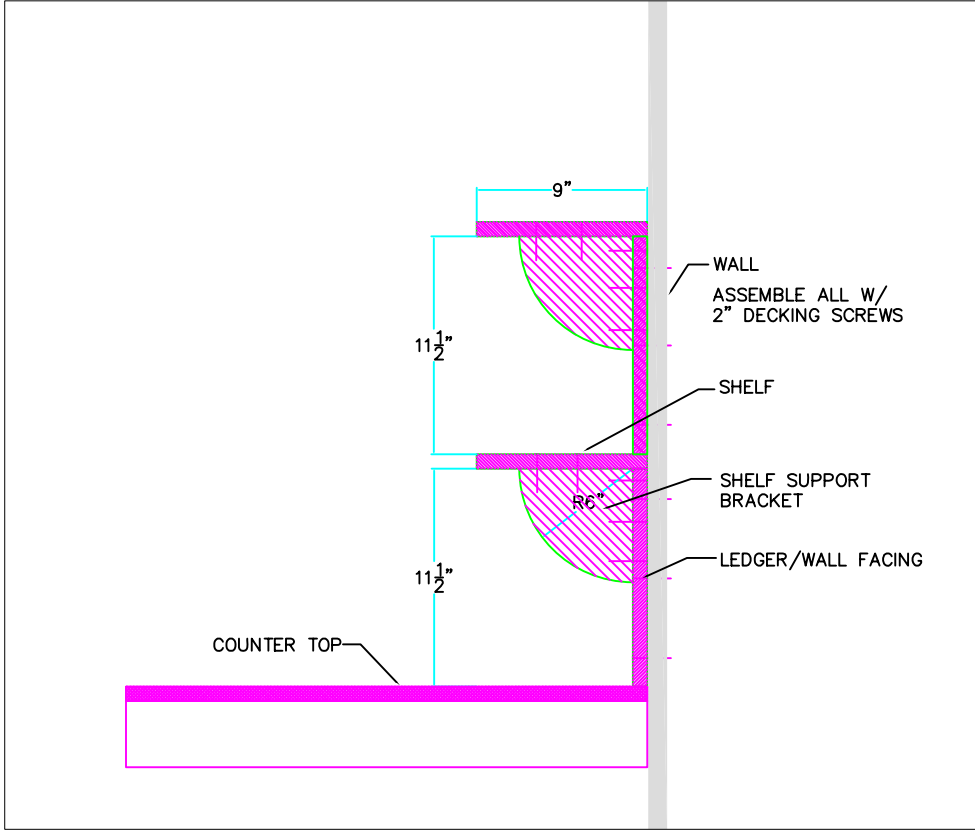


Note:
Chamfer entire length and sides of deck
with router as shown after deck assembly is
complete. Chamfer 1" x 45 degrees.

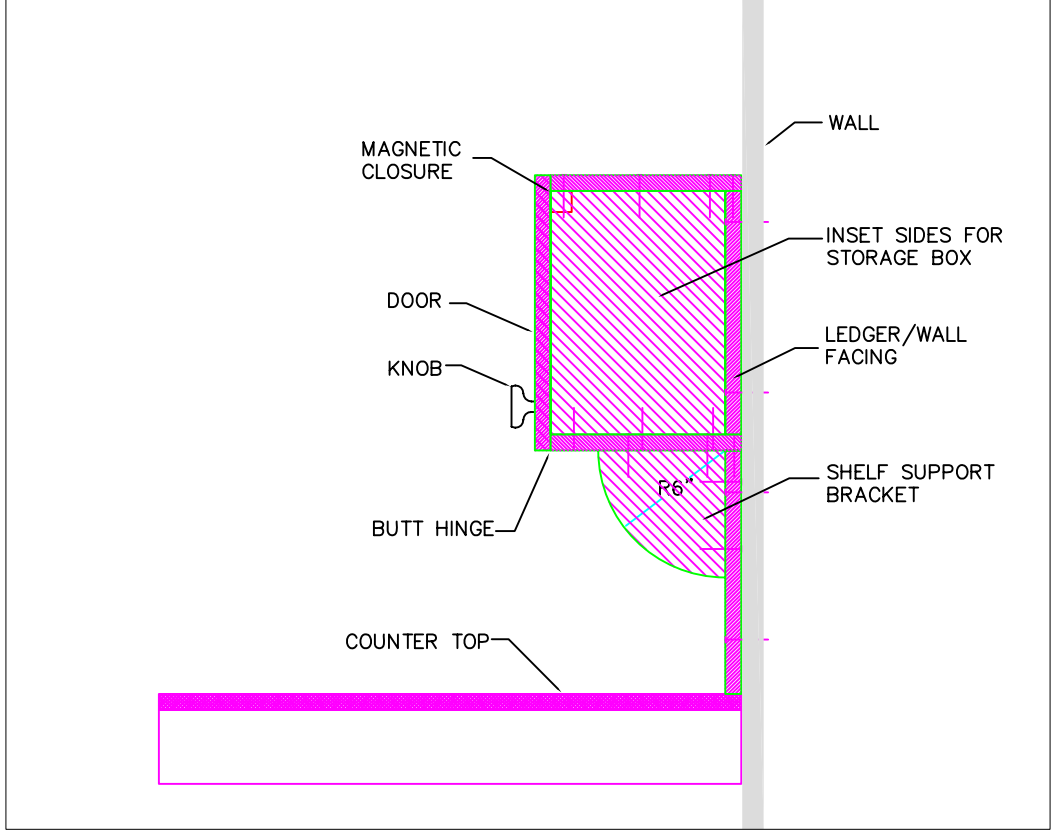




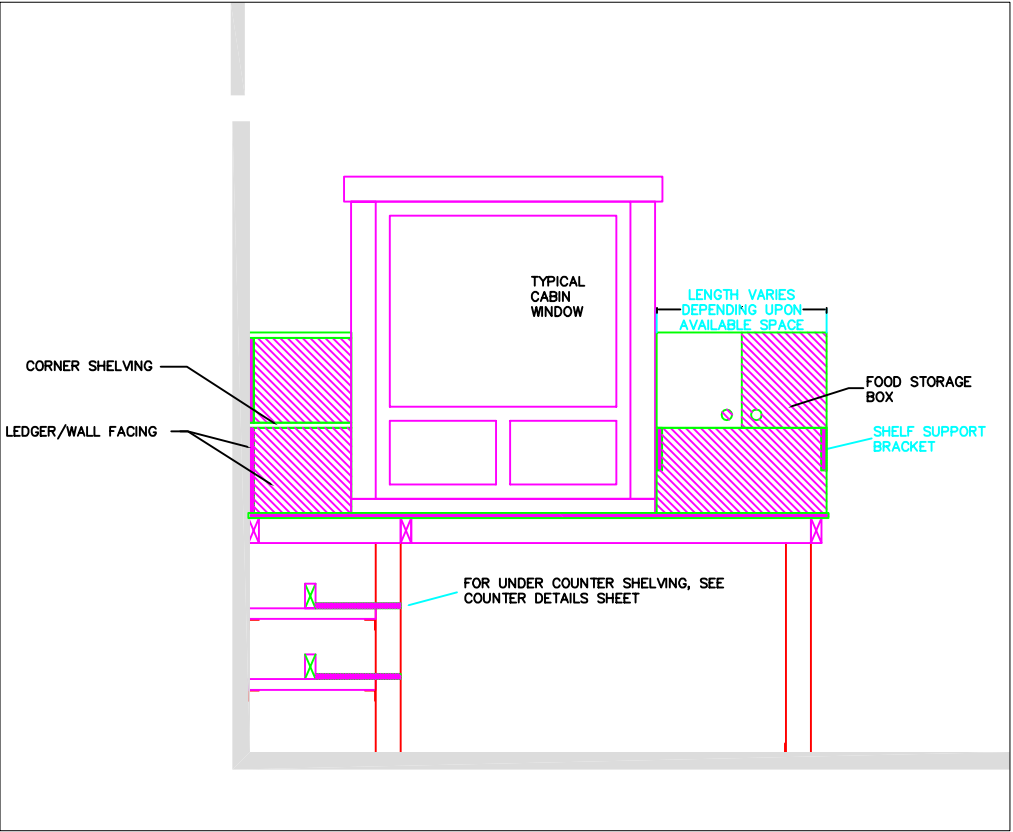
CORNER SHELVING
PLAN VIEW



WALL SHELVING
ELEVATION VIEW

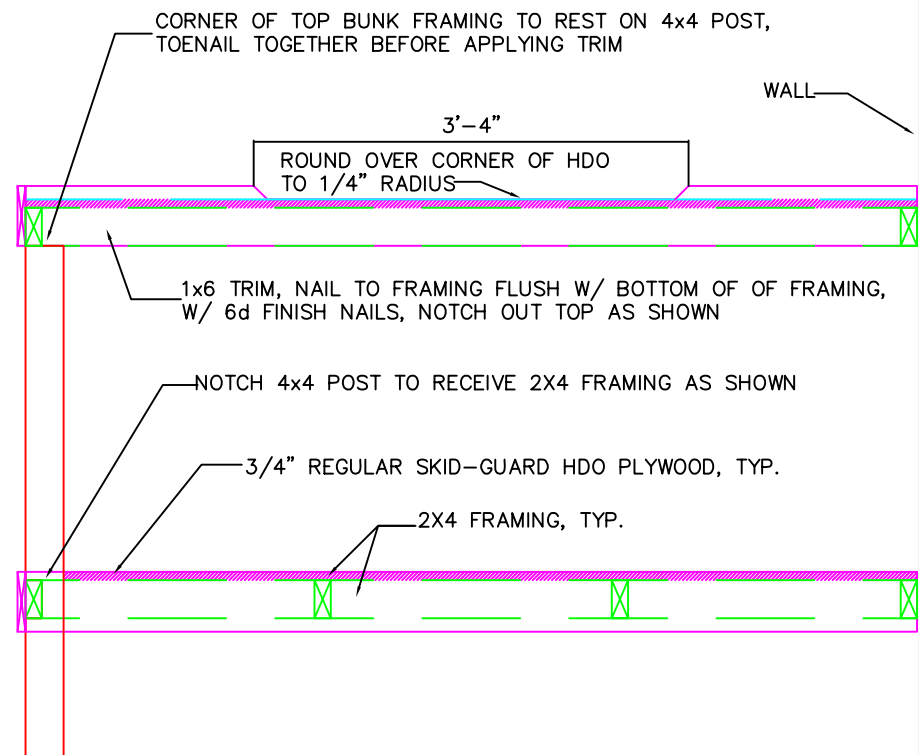


WALL SHELVING W/ FOOD STORAGE BOX
ELEVATION VIEW

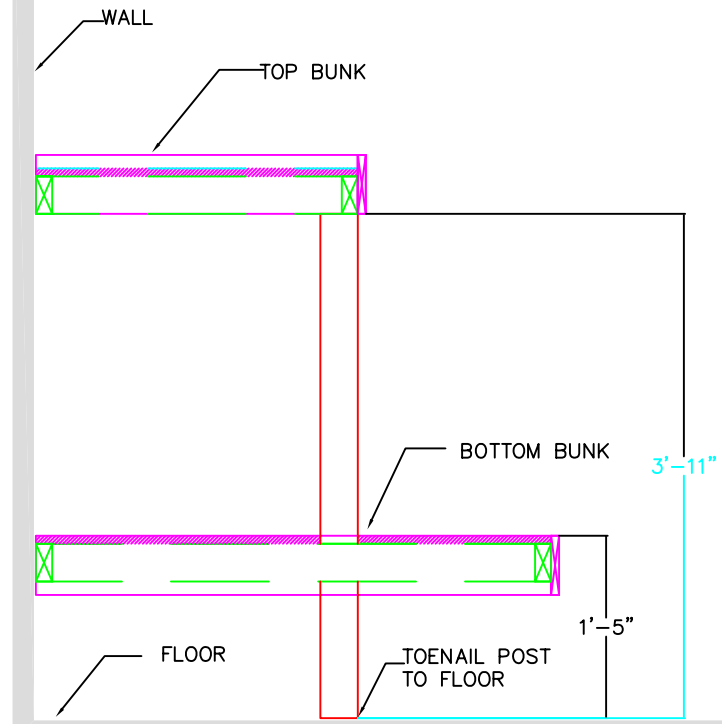


TYPICAL SHELVING INSTALLATION
ELEVATION VIEW

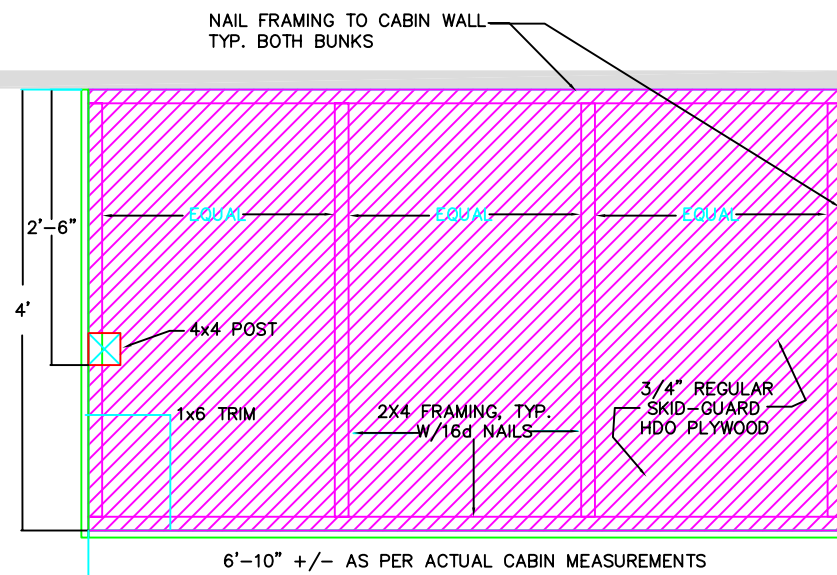
- GENERAL NOTES
- ALL SHELVING TYPES ARE CONSTRUCTED FROM MDO OR HDO 3/4" PLYWOOD, UTILIZING LEFTOVER SCRAPS FROM OTHER FURNISHINGS
 - FULL HEIGHT LEDGER/WALL FACING PIECES PROVIDE BACKSPLASH FOR COUNTER AND EASE ASSEMBLY



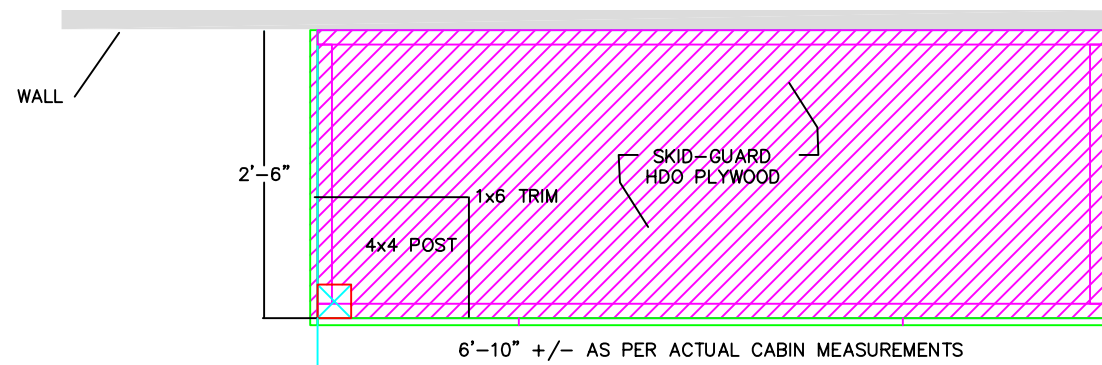
FRONT ELEVATION



SIDE ELEVATION



BOTTOM BUNK FRAMING PLAN



TOP BUNK FRAMING PLAN

MATERIAL LIST	
Q	DESCRIPTION
3 EA.	1x6x8' WESTERN RED CEDAR, #1 OR BTR, S4S
8 EA.	2x4x8' DOUG. FIR, #1 OR BTR. S4S
1 EA.	4x4x4' WESTERN RED CEDAR, #1 OR BTR., S4S
2 EA.	4x8 SHT. 3/4" REGULAR SKID-GUARD HIGH DENSITY OVERLAY (HDO) PLYWOOD, GS-2 (GOOD TWO SIDES)
5 LBS.	16d BOX NAILS
2 LBS	6d (2-1/2") FINISH NAILS
4 LBS	2" DECKING SCREWS, FOR HDO PLYWOOD
1/2 GAL.	WOOD FINISH FOR CEDAR, SAME AS CABIN INTERIOR

WHEELCHAIR ACCESS NOTES: THIS BUNK WAS DESIGNED FOR WHEELCHAIR USE. CHANGING THE DIMENSIONS OR MATERIALS MAY PRECLUDE THIS USE.

MATERIAL LIST

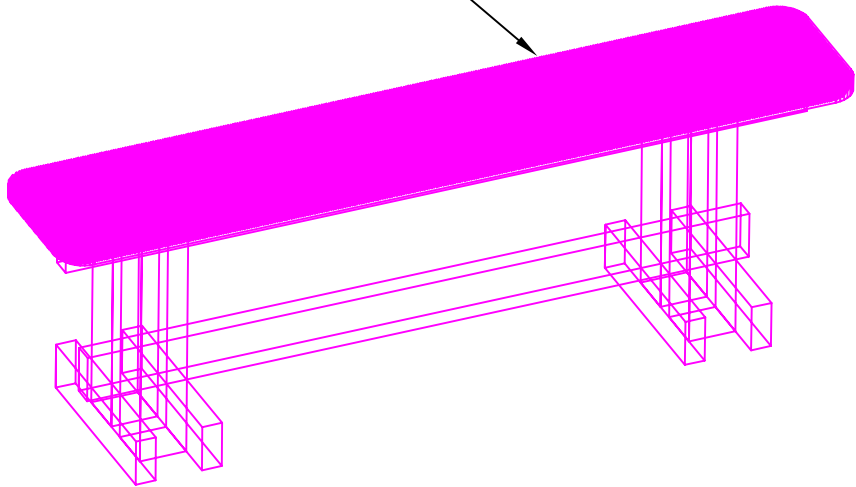
INCLUDES SUFFICIENT MATERIAL FOR A SET OF FOUR BENCHES FOR EITHER THE 5' OR 7' LONG TABLES

QUANTITY	DESCRIPTION
4 EA.	4x4x8' WESTERN RED CEDAR, #1 OR BTR., S4S
1 EA.	4x8 SHT. 1_" REGULAR HIGH DENSITY OVERLAY (HDO) PLYWOOD, GS-2 (GOOD TWO SIDES)
8 EA.	2x4x8' WESTERN RED CEDAR, #1 OR BTR., S4S
16 EA.	3/8" x 6 1/2" GALV. CARRIAGE BOLTS
16 EA.	3/8" x 8 1/2" GALV. CARRIAGE BOLTS
40 EA.	GALV. WASHERS
40 EA.	GALV. NUTS
35 EA.	#12 x 2" WOOD SCREWS
1/4 GAL.	WOOD FINISH FOR FRAMING, SAME TYPE AS CABIN INTERIOR

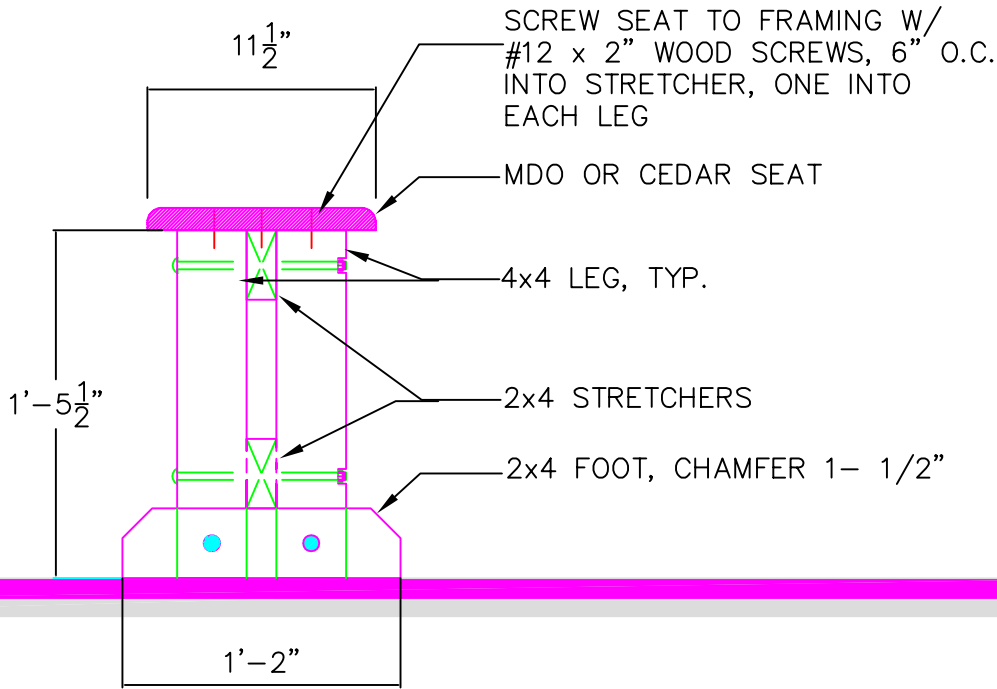
RED CEDAR BENCH TOP:

3 EA. 2x12x8' WESTERN RED CEDAR, #1 OR BTR.

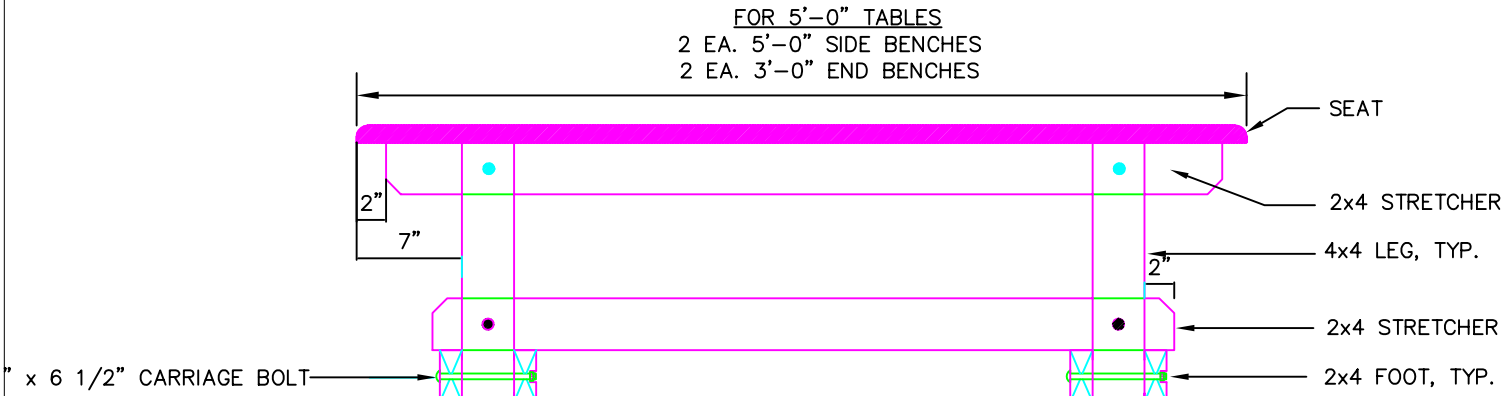
ROUND CORNERS TO 2" RADIUS



ISOMETRIC VIEW



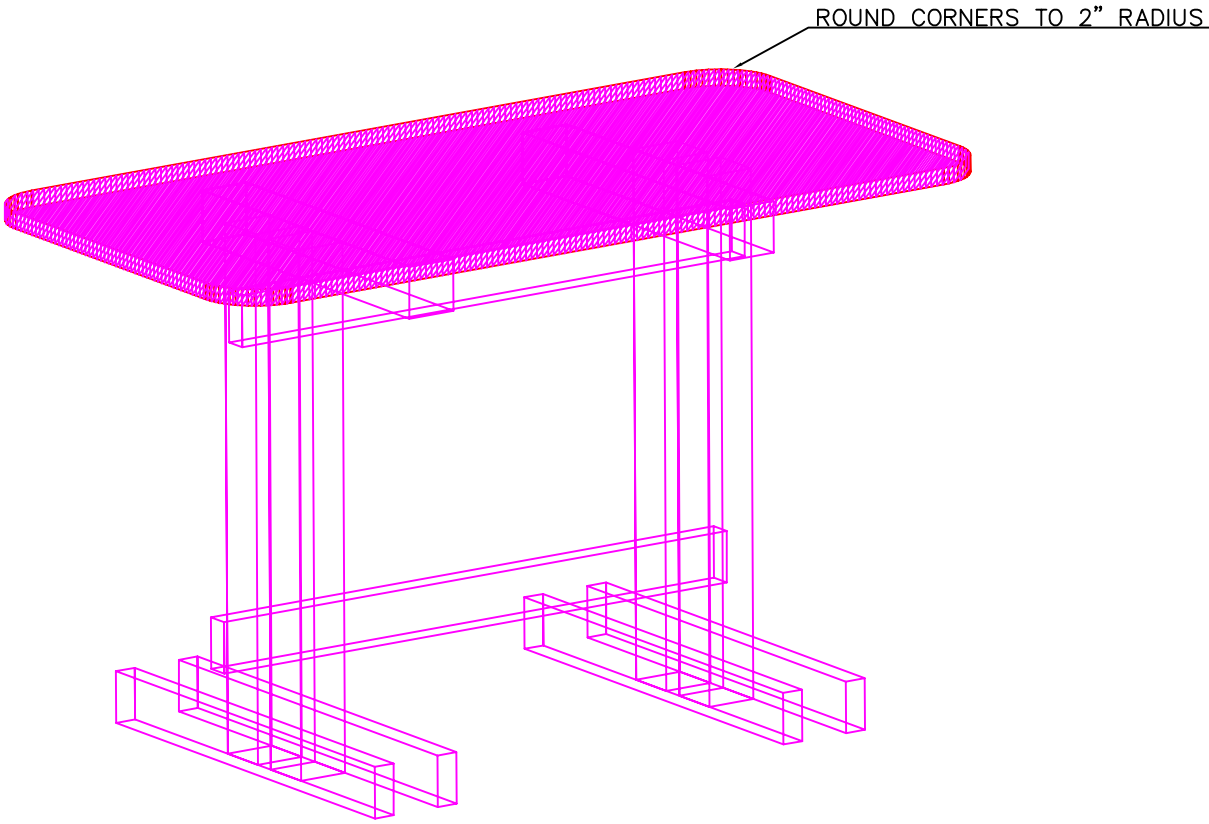
END VIEW



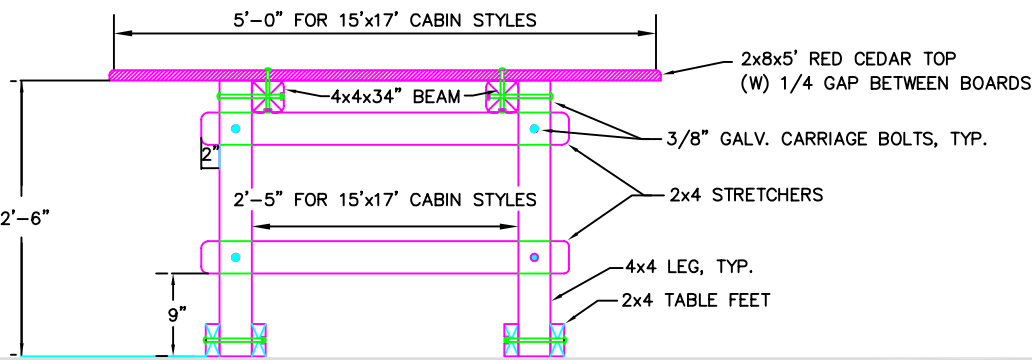
SIDE VIEW

MATERIAL LIST

SUFFICIENT MATERIAL FOR EITHER 5'LONG TABLE	
Q	DESCRIPTION
2 EA.	4x4x8' WESTERN RED CEDAR, #1 OR BTR. , S4S
3 EA.	2x4x8' WESTERN RED CEDAR, #1 OR BTR. , S4S
7 EA.	2x6x8" Western Red Cedar, #1 OR BTR
4 EA.	3/8"x8" GALV. CARRIAGE BOLTS
8 EA.	3/8"x6" GALV. CARRIAGE BOLTS
10 EA.	3/8"x4" GALV. CARRIAGE BOLTS
26 EA.	3/8" GALV. WASHERS
26 EA.	3/8" GALV. NUTS
1/4 GAL.	WOOD FINISH FOR FRAMING, SAME TYPE AS CABIN INTERIOR

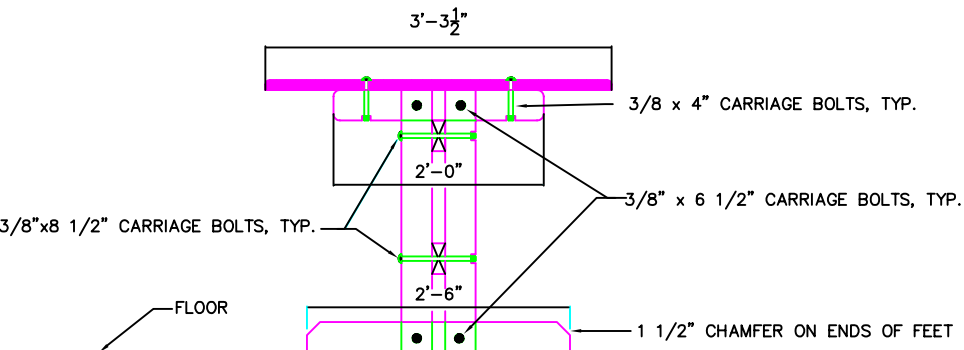


ISOMETRIC VIEW



WHEELCHAIR ACCESS NOTES: THIS TABLE WAS DESIGNED FOR WHEELCHAIR USE.
CHANGING DIMENSIONS OR MATERIALS MAY PRECLUDE THIS USE.

SIDE VIEW



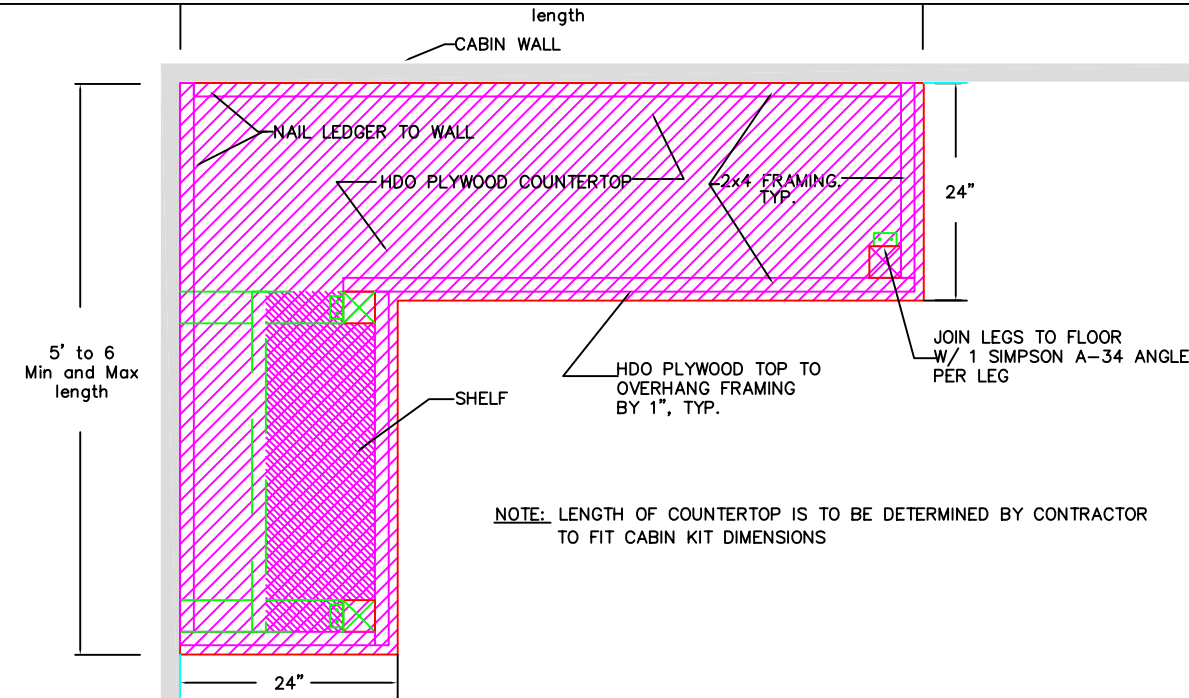
ROUND OVER EDGES
ROUND OVER TABLE TOP EDGE
TO 2" RADIUS,
ROUND OVER EXPOSED FRAME
MEMBERS TO 1" RADIUS

END VIEW

SUFFICIENT MATERIAL FOR 10 L.F. COUNTER AS SHOWN,
ADD ADDITIONAL MATERIAL AS NECESSARY FOR LONGER INSTALLATIONS

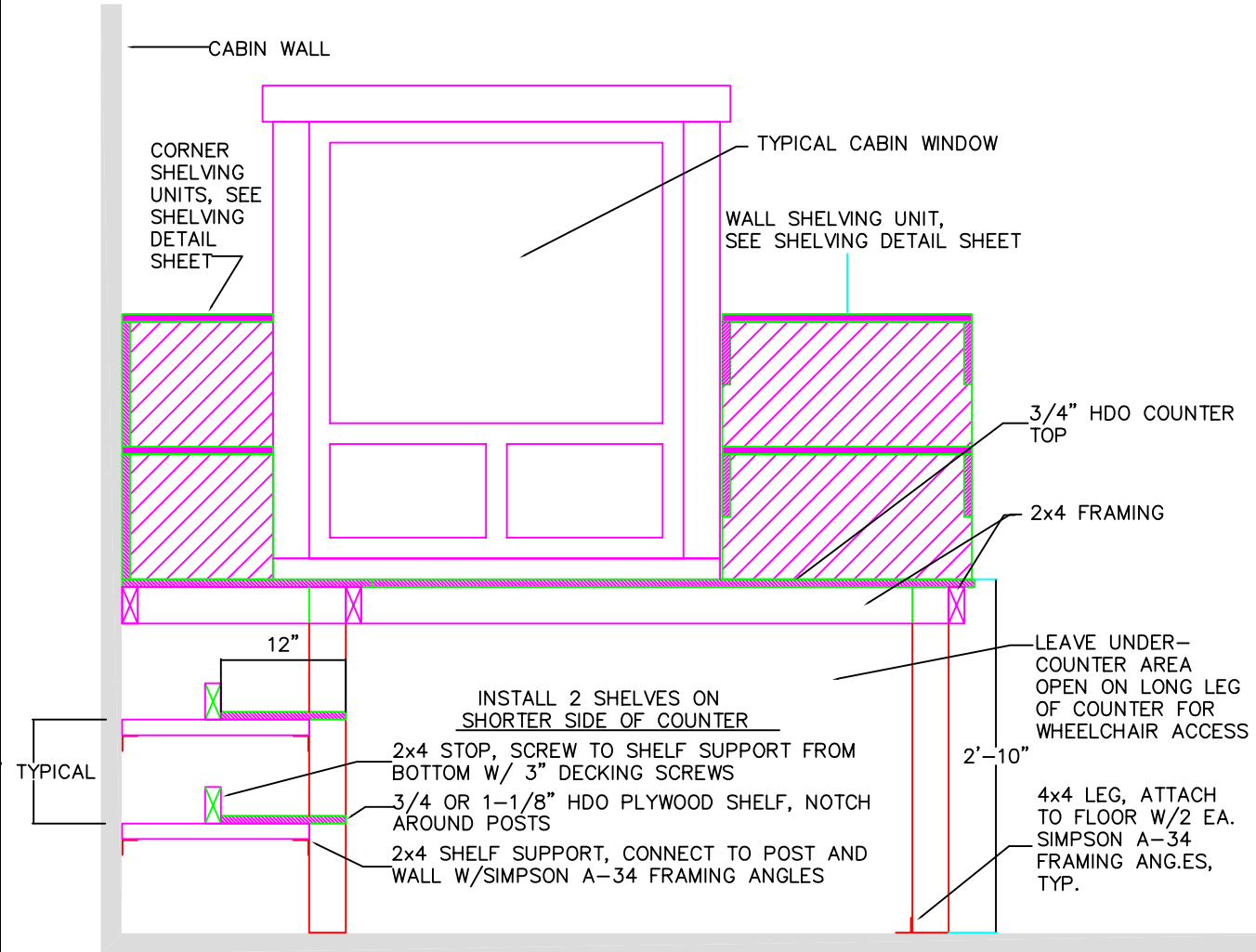
QUANTITY	DESCRIPTION
4 EA.	2x4x8' WESTERN RED CEDAR, #1 OR BTR. S4S
1 EA.	4x4x10' WESTERN RED CEDAR, #1 OR BTR. , S4S
1 EA.	4x8 SHT. 3/4" REGULAR HIGH DENSITY OVERLAY (HDO) PLYWOOD, GS-2 (GOOD TWO SIDES)
7 EA.	SIMPSON A-34 FRAMING ANGLES W/ NAILS
3 LBS.	16d BOX NAILS
50 EA.	2" DECKING SCREWS, TO ATTACH COUNTERTOP TO FRAMING
1/4 GAL.	WOOD FINISH FOR FRAMING, SAME TYPE AS CABIN INTERIOR

MATERIAL LIST



WHEELCHAIR ACCESS NOTES: THIS COUNTER WAS DESIGNED FOR WHEELCHAIR USE. CHANGING DIMENSIONS OR MATERIALS MAY PRECLUDE THIS USE.

PLAN VIEW



ELEVATION VIEW